



KEY FEATURES

- Supports one AMC.1, AMC.2 or AMC.3
- PCIe x4 lanes
- Optional VT001 IPMI Management Controller
- AMC.2 GbE to RJ-45
- AMC.3 to SATA headers
- IPMI 2.0 compliant
- Connectors to access the I²C bus
- Can run standalone without the host PC
- RoHS compliant

The PCI101 allows testing of AMC.1, AMC.2 and AMC.3 modules in a PC environment during development and manufacturing; reducing the costs associated with maintaining different platforms.

The PCI101 is a PCIe edge style carrier with x4 lanes. The AMC.1 module connects directly to the host PC PCIe bus. The AMC.2 module GbE ports are routed to RJ-45s. The AMC.3 differential pairs are routed to two SATA connectors. The PCI101 is available with a socket for an optional VT001 IPMI controller which can test the AMC IPMI management functionality. The Dual I²C bus connectors allow connecting any I²C bus to any other I²C bus as well as being able to debug and monitor the I²C bus traffic.

Provides two current sense resistors to measure the payload power as well as the management power of the AMC.

The PCI101 can be powered on the bench without the host PC.

VadaTech can modify this product to meet special customer requirements without NRE (minimum order placement is required).

AdvancedMC™

PCIe Carrier for AMC Modules

SPECIFICATIONS

| Architecture | | |
|----------------------|---|---|
| Physical | Dimensions | Full size PCIe bus format |
| | | Width: 8.865 in. (225 mm) |
| | | Depth: 9.5 in. (241 mm) |
| Product | PCIe Carrier | Carrier for AMCs |
| Standards | | |
| AMC | Type | AMC.1, AMC.2 and AMC.3 |
| PCIe | Lanes | x4 |
| Configuration | | |
| Power | PCI101 | 4 W with the VT001 installed |
| | Temperature | Operating Temperature: 0° to 65° C Storage Temperature: -40° to +90° C |
| Environmental | Relative Humidity | 5 to 95 percent, non-condensing |
| | Style | AMC B |
| Interface Connectors | AMC.1 | To PCIe edge |
| | AMC.2 | To RJ-45 (through transceiver) |
| | AMC.3 | To two SATA connectors |
| | IPMI Controller | VT001 |
| Other | | |
| MTBF | MIL Spec 217-F >205,000 Hrs. (without the Fan) | |
| Certifications | Designed to meet FCC, CE and UL certifications where applicable | |
| Standards | VadaTech is certified to both the ISO9001:2000 and AS9100B:2004 standards | |
| Compliance | RoHS | |
| Warranty | Two (2) years | |
| Trademarks and Logos | The VadaTech logo is a registered trademark of VadaTech, Inc. Other registered trademarks are the property of their respective owners. AdvancedMC™ and the AdvancedTCA™ logo are trademarks of the PCI Industrial Computers Manufacturers Group. All rights reserved. Specification subject to change without notice. | |

PCIe Carrier for AMC Modules

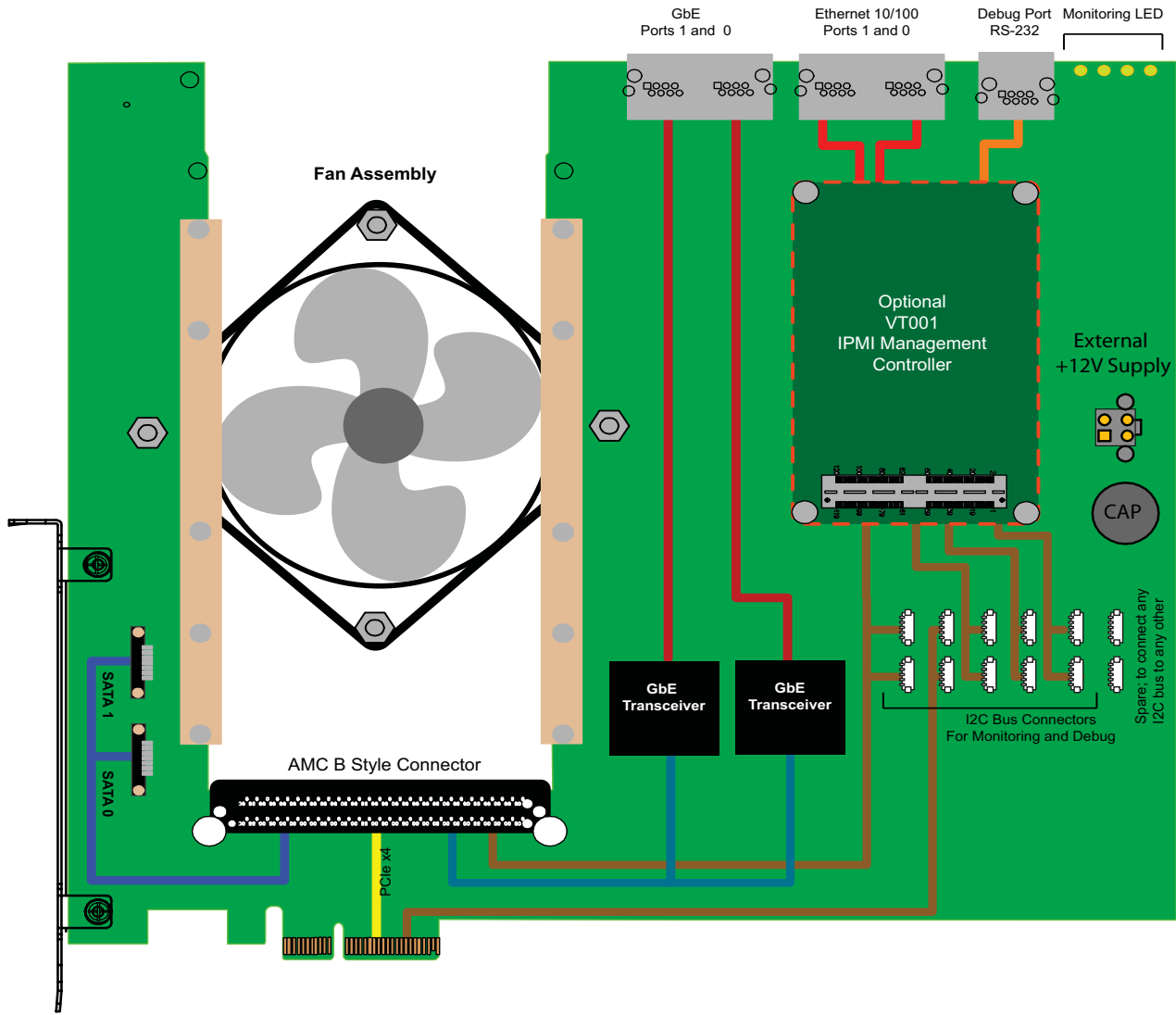


FIGURE 1. PCI101 Functional Block Diagram

ORDERING OPTIONS

PCI101 - A00 - 000 - 00J

A = IPMI Controller

0 = None

1 = With the VT001

J = Conformal Coating

0 = None

1 = Humiseal 1A33 Polyurethane

2 = Humiseal 1B31 Acrylic



Document No _____ Date: July 20 2007