

TIP903 Three Channel Extended CAN Bus

Application Information

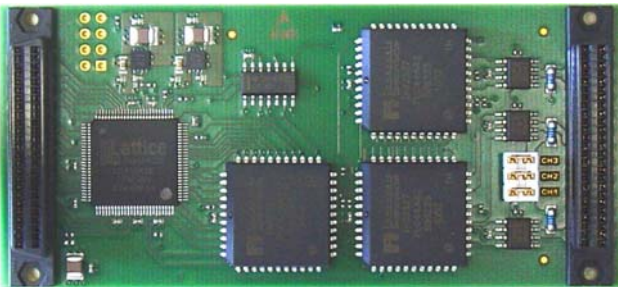
The TIP903 is an IndustryPack® compatible module with three extended CAN bus interfaces using three 82527 CAN controllers.

The controllers support the standard data and remote frame as well as the extended data and remote frame according to CAN specification 2.0 part A and part B (standard 11 bit identifier and extended 29 bit identifier).

It has the capability to transmit, receive and perform message filtering on extended and standard messages.

The TIP903 supports a 16 bit bus interface which permits word and byte accesses to the internal registers of the three CAN controllers. The physical interface supports CAN High Speed according to ISO11898 for each of the three channels.

The bus line termination is selectable by jumpers separate for each bus line. The data transfer rates of up to 1 Mbps are supported for a bus line length of 40 m.

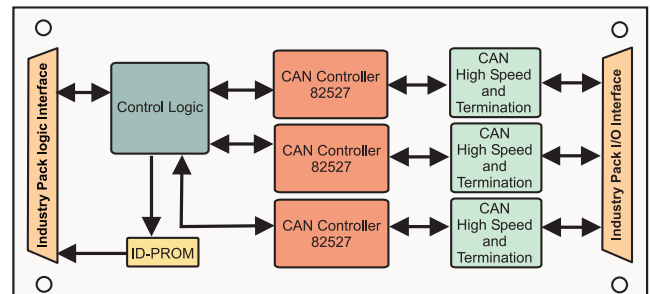


For First-Time-Buyers the engineering documentation TIP903-ED is recommended. The engineering documentation includes TIP903-DOC, schematics and data sheets of TIP903.

Software Support (TIP903-SW-xx) for different operating systems is available.

Technical Information

- Form Factor: Single-Size IndustryPack Module
 - Board size: 45.73mm x 99.09mm
- Identification-PROM supports auto-configuration
- 8 MHz IP Clock
- Three CAN Bus interfaces based on 82527 CAN Controller
- Support of CAN specification 2.0 Part A and B (standard and extended data frames)
- Programmable global mask
- 15 message objects of 8 byte data length
- Powerful error handling
- Programmable transfer rates
- Physical interface CAN High Speed (according to ISO 11898) per channel
- Maximum transfer rate 1 Mbit/s (bus length up to 40m)
- Operating temperature -40°C to +85°C
- MTBF (MIL-HDBK217F/FN2 G_B 20°C)
TIP903-10: 1418000 h



Order Information

RoHS Compliant

TIP903-10R Three Channel Extended CAN Bus interface, extended temperature range

None RoHS Compliant

TIP903-10 None RoHS compliant version of TIP903-10R

Documentation

TIP903-DOC User Manual

TIP903-ED Engineering documentation (TIP903-DOC, Schematics, Assembly Drawing, Data Sheets)

Software

TIP903-SW-25 Integrity Software Support

TIP903-SW-42 VxWorks Software Support (Legacy and VxBus-Enabled Software Support)

TIP903-SW-65 Windows XP/XPE/2000 Software Support

TIP903-SW-72 LynxOS Software Support

TIP903-SW-82 Linux Software Support

TIP903-SW-95 QNX 6 Software Support

For other operating systems please contact TEWS.