

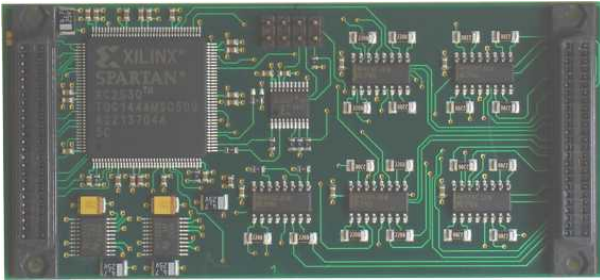
## TIP119 6 Channel 16 bit Quadrature Decoder Counter

### Application Information

The TIP119 is an IndustryPack® compatible module providing six channels of quadrature decoder inputs. Each channel has a dedicated 16 bit wide quadrature decoder counter.

The input signals can be of RS422A and RS423A level and pass a digital filter for noise suppression before they are fed into the counter.

An interrupt can be generated at counter over- or underflow or on assertion of the index input. An 8 bit interrupt vector is supported.

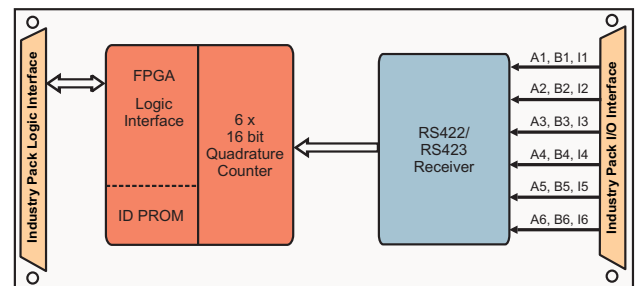


For First-Time-Buyers the Engineering Documentation TIP119-ED is recommended. The Engineering Documentation includes TIP119-DOC, schematics and data sheets of TIP119.

Driver support (TIP119-SW-xx) is available for different operating systems.

### Technical Information

- Interface according to IndustryPack specification
- Single Size IndustryPack
- 6 Channels 16 bit quadrature counter
- Vectored interrupt
- Inputs RS422/RS423 compatible
- 1.3 MHz maximum tracking rate
- 220 ohm input impedance
- Operating temperature 0°C to +70°C



### Order Information

#### RoHS Compliant

**TIP119-10R** 6 Channel Quadrature IP

#### None RoHS Compliant

TIP119-10 None RoHS compliant version of TIP119-10R

#### Documentation

**TIP119-DOC** User Manual

**TIP119-ED** Engineering Documentation, includes TIP119-DOC

#### Software

**TIP119-SW-25** Integrity Software Support

**TIP119-SW-42** VxWorks Software Support (Legacy and VxBus-Enabled Software Support)

**TIP119-SW-65** Windows XP/XPE/2000 Software Support

**TIP119-SW-72** LynxOS Software Support

**TIP119-SW-82** LiNux Software Support

**TIP119-SW-95** QNX 6 Software Support

For other operating systems please contact TEWS.