

Storage Controller PMC

Single-ended Fast/Wide SCSI Controller PMC

The SCSI PMC adapter from Technobox interfaces a host board PCI bus to a standard SCSI interface via a 53C875 controller, using single-ended signalling.

The SCSI bus is available out the front panel using a 68-pin connector recommended by the ANSI X3.131 specification, which governs SCSI implementation. It is also available out the rear 64 user I/Os on the PMC, which are in turn connected to the P2 connector of a VMEbus host processor supporting rear I/O connectivity.

A paddle card is available from Technobox to convert the 64-pin P2 connector back into the 68-pin SCSI connector.

This product supports single-ended SCSI interface operation. An active termination network for each SCSI signal line terminates the SCSI bus. A DIP Switch on the PMC card allows the user to either enable or disable the Termination function.

The 53C875 SCSI controller from LSI Logic (formerly Symbios) features an intelligent processing engine which executes special programs (scripts) in the host processor memory to effect SCSI sequences. This reduces processor overhead in handling the SCSI interface operation.

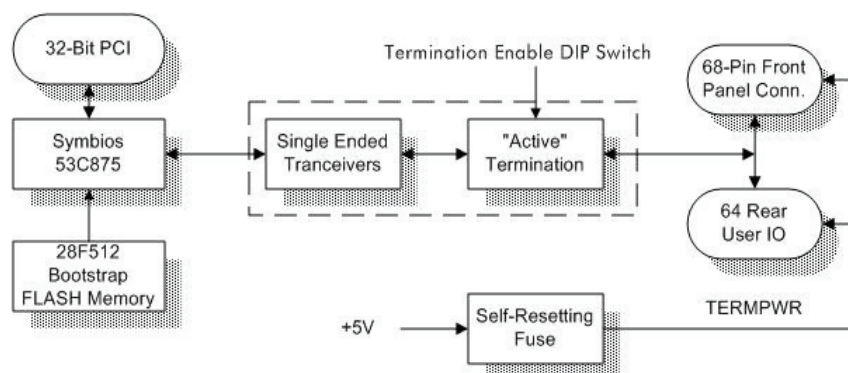
The 53C875 controller supports 1-byte and 2-byte wide SCSI buses (2-byte = Wide) operating in either asynchronous or synchronous (i.e., Fast) protocol. The FAST-20 SCSI specification, which permits 20 MB/s or 40 MB/s transfer rate on a 1-byte or 2-byte wide SCSI bus, is supported by the 53C875, enabling synchronous mode transfers at up to 40 MB/s.

The SCSI PMC adapter provides termination power (TERMPWR) through a Schottky diode as is typically done in most SCSI implementations. This design features a self-resetting fuse which automatically shuts off when excessive TERMPWR current is supplied to

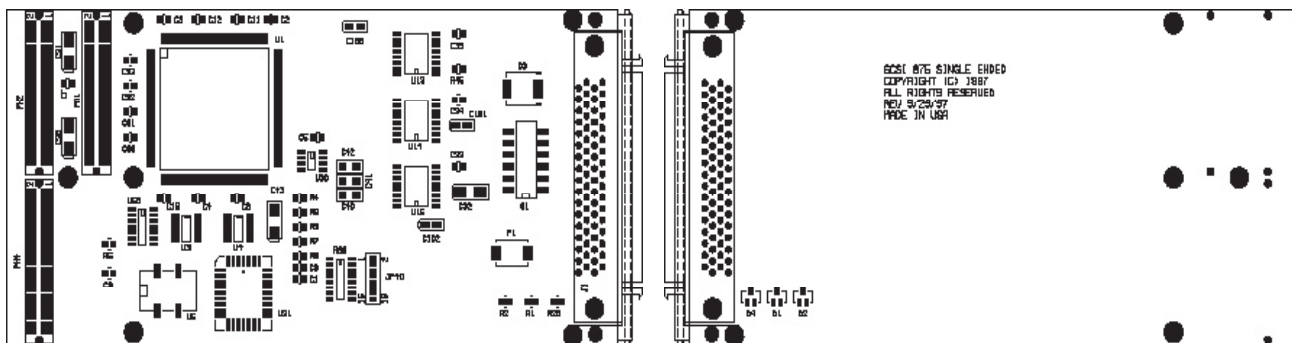


5238

- Supports Fast/Wide SCSI (front and rear)
- LSI 53C875 controller
- Rates up to 40 MB/s
- Selectable active signal line termination
- Support for 1- and 2-byte wide buses
- Optional P2 paddle card for rear I/O
- RoHS-compliant, Lead-free



Technobox



the SCSI bus. This self-resetting fuse will automatically re-power the SCSI interface following removal of the offending short circuit.

This design also supports the Bootstrap FLASH memory option, where

users can store boot-up code on the PMC. Most applications, however, will use driver code installed and running in the host processor, so the Bootstrap FLASH memory is unused.

Software supplied with this product consists of the binary object code usually licensed with the sale of each LSI Logic part. Please contact LSI Logic or Technobox for more information regarding software support.

Specifications

Temperature (Operating): 0° to 55° C

Temperature (Storage): -40° to +85° C

Altitude: Not specified or characterized (Typical similar equipment is at 15,000 ft.)

Humidity (Operating/Storage): 5% to 90% non-condensing

Vibration: Not specified or characterized

MTBF: Available upon request

PCI Environment: 3.3V and 5V

Power: TBD

Ordering Information

5238: Single-ended Fast/Wide SCSI Controller PMC

2699: Rear I/O Paddle Card

Technobox, inc.®

Copyright © Technobox 2007

DS5238-A70220

Technobox, Inc.
140 Mount Holly Bypass
Unit 1
Lumberton, NJ 08048
Tel: 609-267-8988 • Fax: 609-261-1011
www.technobox.com