

# MOXA *SoftDVR*™ Pro

*Expandable and Easy-to-use Video over IP Surveillance Software*



MOXA SoftDVR™ Pro IP Surveillance Software is designed for video-over-IP surveillance systems that use MOXA VPort series Video Servers as the Distributed Video Networking solution. With the help of MOXA SoftDVR™, system integrators can seamlessly integrate other applications, such as I/O sensors and alarms, with CCTV systems over an IP-based network.

## Introduction

### Viewing & Playback, Anywhere & Anytime

- Remote access from popular web browsers
- Supports 1, 4, 6, 8, 9, 10, 13, 16 camera viewing formats
- Maximum of 16 cameras in a system
- Synchronized video/audio viewing and recording (for VPort MPEG4 video servers)
- Historical playback by time and event
- Zoom-in/Zoom-out function for individual cameras when playing back images
- Take snapshots in playback mode to get JPEG images for printing or to save as evidence
- Can adjust the contrast, brightness, sharpness, blur, and grayscale of the snapshot image



### Recording & Storing over the Ethernet/Internet

- Recording action can be triggered in round-the clock mode or event mode of VMD (Video Motion Detection) and DI
- Record video in AVI format—compatible with popular media players
- Dynamically adjust recording frame rate over the LAN/Internet to match the real frame transmit speed, to keep the video synchronized with the actual time
- Recorded video format can be selected as adjustable FPS MJPEG, or MPEG4 standard, for VPort MJPEG video servers.
- Recyclable override of hard disk space in FIFO (First-In-First-Out) sequence
- Recorded video files can be stored on a local PC or Windows-based networked storage server



**Schedule Jobs for Recording and Remote Service**

- Administrators can set up the time schedule of remote service and the recording action for each camera



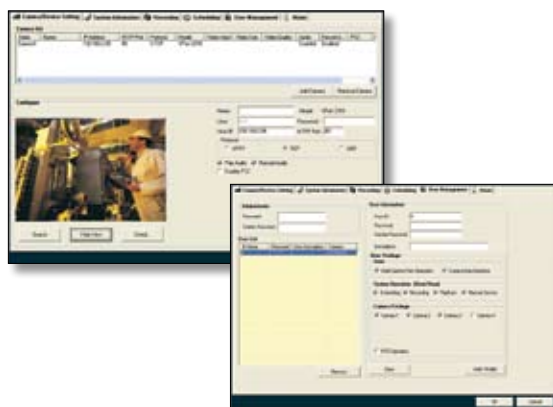
**Alarm Message Triggered and Sent**

- Area-selectable Video Motion Detection (VMD) function for each camera
- Sensitivity tuning for the VMD
- Alarm can be triggered by VMD, video lost, communication failure, storage failure, storage full, DIs, and then sent by email, or trigger relays (DOs), sound, or a PTZ camera to a preset position



**Video Server Configuration & System Management**

- Can configure each camera's name, video quality, and video resolution separately
- Supports PTZ camera controls (same as VPort series Video Servers' support list)
- Supports MOXA VPort series Video Servers
- Up to 32 users can be added to one system
- Supports remote VPort's firmware upgrade
- Can set up the camera view and system operation for each user
- Automatically resume viewing and recording after system reboot
- Cameras can be managed easily with your own e-map



**Ordering Information**

**SoftDVR™ Pro:** CD with SoftDVR™ Pro software and User's Manual

- Items included:**
- Key Pro (plug in parallel printer port)
  - MOXA SoftDVR™ Pro Quick Installation Guide

**System Requirements**

- MS Windows 2000/XP
- Intel Pentium IV 2.4 GHz or above
- 256 MB SDRAM or above
- AGP (2X) VGA card with 32 MB of Display Memory or above
- DirectX 8.1 or above

**SoftDVR™ Lite bundled free with VPort series Video Servers**

- 1- to 4-ch (Quad) viewing format; max. 4 cameras
- Supports viewing and recording on local PCs
- Full image VMD with sensitivity tuning
- Schedule jobs for recording
- System requirements:
  - MS Windows 2000/XP
  - Intel Pentium III 1 GHz or above
  - 128 MB SDRAM or above
  - DirectX 8.1 or above
  - AGP (2X) VGA card with 32 MB of display memory or above

