

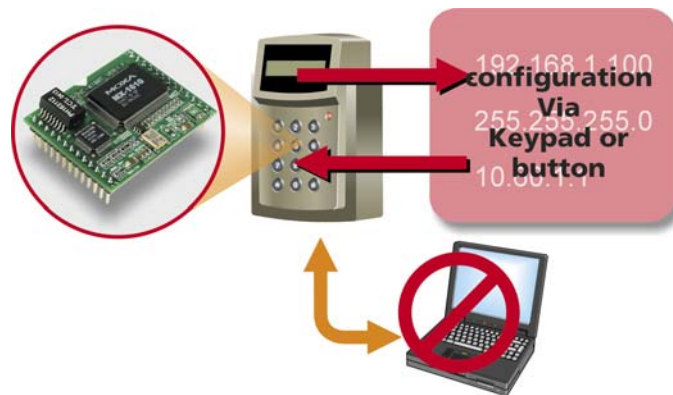
## NE-4100-CMD Series Lets you configure on-site

- Easy to configure Network settings on-site
- Simple command frame format
- Comprehensive readable command set for Network settings and Serial settings
- Easily switch between Software and Hardware Trigger Types
- Software Reset available

### Overview

The NE-4100-CMD Series, an advanced series of Embedded Network Enablers based on Moxa's NE-4100 Series, provides customers with the capability of sending serial commands via the serial port. Serial commands are used to retrieve or configure parameters stored in the flash memory, and since the commands are sent via the module's serial port, NE-4100-CMD Series offers serial device manufacturers the option of adding local configuration capability to their products.

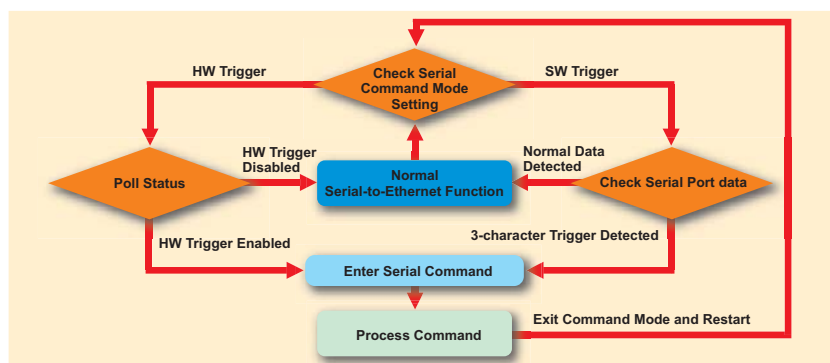
For example, card reader manufacturers can program the keypad on a card reader to configure network settings (IP address, netmask, etc.) allowing end-users to configure the device on-site, without the need to carry around and set up a laptop.



### Target Markets

- Card Reader Manufacturers
- Electronic Scales Manufacturers
- Manufacturers of Keypads, LCD Display Devices, and other devices with an HMI (Human Machine Interface)

### Operation Flowchart



# NE-4100 Series

## 100 Mbps Embedded Network Enabler for Serial Devices

### Features

- Ready-to-go Serial-to-Ethernet module to network enable any serial device (RS-232/422/485, TTL)
- 10/100 Mbps Ethernet interface, 115.2 Kbps Serial interface
- Supports TCP Server/Client, UDP, and Real COM operation modes
- Supports DHCP, BootP, Static IP, and ARP
- Supports SNMP and Email Alert functions for event trapping and notification
- Half the size of a credit card—only 57 × 40 mm
- Single +5V input, 1.5W low power consumption



NE-4110S  
NE-4110A



NE-4120S  
NE-4120A



NE-4100T

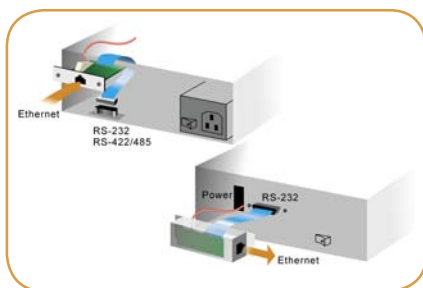
MOXA NE-4100 Series Network Enablers are designed for manufacturers who want to add sophisticated network connectivity to their products. Any device with a standard serial interface can now connect to Ethernet with Moxa Network Enablers in a snap. NE-4110 Series provides a 10/100 Mbps Ethernet interface with ready-to-use TCP Server/Client and UDP, and a Real COM driver is also included for backward compatibility with the original software.

### SNMP and Email Alert for Event Trap/Notification

NE-4100 Series will send SNMP trap or Emails when the following conditions occur:

- Cold/Warm start
- Password authentication fails
- DSR/DCD line signal changes
- IP Setting changes
- Password changes

### Typical Installation Examples



**Stand-alone Type**  
(RJ45 Ethernet, NE-4110 Series)



**Stand-alone Type**  
(Pin header Ethernet, NE-4110 Series)



**Drop-in Type**  
(Dual-in-line pin header, NE-4100T)

## Specifications

### Form Factor

#### Type:

NE-4110/4120 Series: Stand-alone module, ready-to-go  
NE-4100T Series: 26-pin dual-in-line package

#### Dimensions:

NE-4110/4120 Series: 57 × 40 mm  
NE-4100T Series: 45 × 36 mm

### LAN Interface

**Type:** 10/100 Mbps auto-sensing

**Protection:** 1.5 KV isolation

**Connector:** NE-4110 Series: RJ45 connector  
NE-4120 Series: 5-pin Pin Header

### Serial Interface

#### Port 1:

NE-4110S/4120S: RS-232  
NE-4110A/4120A: RS-422/RS-485 (2-wire)/RS-485 (4-wire)  
NE-4100T: serial (TTL)

**Port 2:** serial (TTL) console port

#### Serial Signals

**RS-232:** TxD, RxD, RTS, CTS, DTR, DSR, DCD, GND

**RS-422:** Tx+, Tx-, Rx+, Rx-, GND

**RS-485:** Data+, Data-, GND with ADDC™  
(Automatic Data Direction Control)

**TTL (Port 1):** TxD, RxD, RTS, CTS, DTR, DSR, DCD, GND

**TTL (Port 2):** TxD, RxD, GND

#### Serial Parameters

**Parity:** None, Even, Odd, Space, Mark

**Data Bits:** 5, 6, 7, 8

**Stop Bits:** 1, 1.5, 2

**Flow Control:** RTS/CTS, XON/XOFF

**Speed:** 50 bps to 115.2 Kbps

### Digital I/O Pins

Four programmable I/O pins (GPIO)

### Software Features

**Protocols:** ICMP, ARP, IP, TCP, UDP, DHCP, Telnet, HTTP, SNMP, SMTP

**Operation Modes:** TCP Server, TCP Client, UDP, Real COM Driver (supporting Windows 98/NT/2000/XP)

### Management

**Management Tools:** Windows Administration Utility, Web browser, Telnet console, serial console, and NECI (.DLL) for developing users' own management utility

**SNMP trap:** Cold/Warm start, IP setting changed, Password authentication failure, Password changed, DSR/DCD line signal changed

### Power Requirements

**Power input:** 5 VDC, +/- 5%

**Power consumption:** 290 mA @ 5 VDC (max.)

### Temperature/Humidity

**Operation:** 0 to 70°C (32 to 158°F), 5 to 95% RH

**Storage:** -20 to 85°C (-4 to 185°F), 5 to 95% RH

### Regulatory Approvals

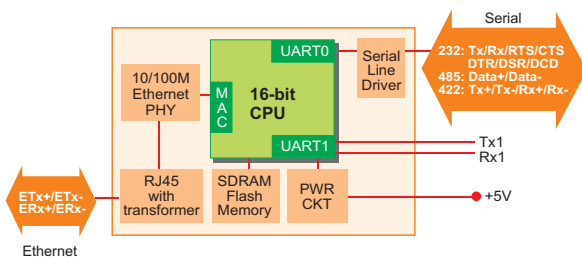
FCC Class B, CE Class B

### Warranty

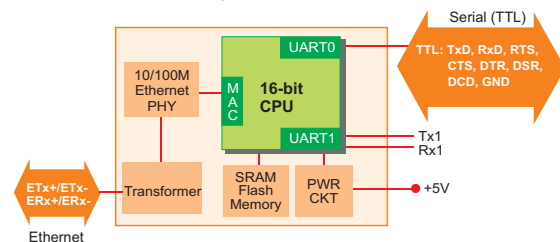
5 years

## Block Diagram

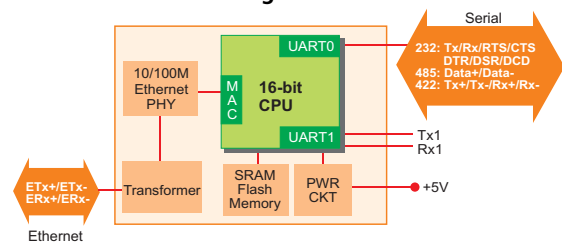
NE-4110 Series Block Diagram



NE-4100T Block Diagram



NE-4120 Series Block Diagram

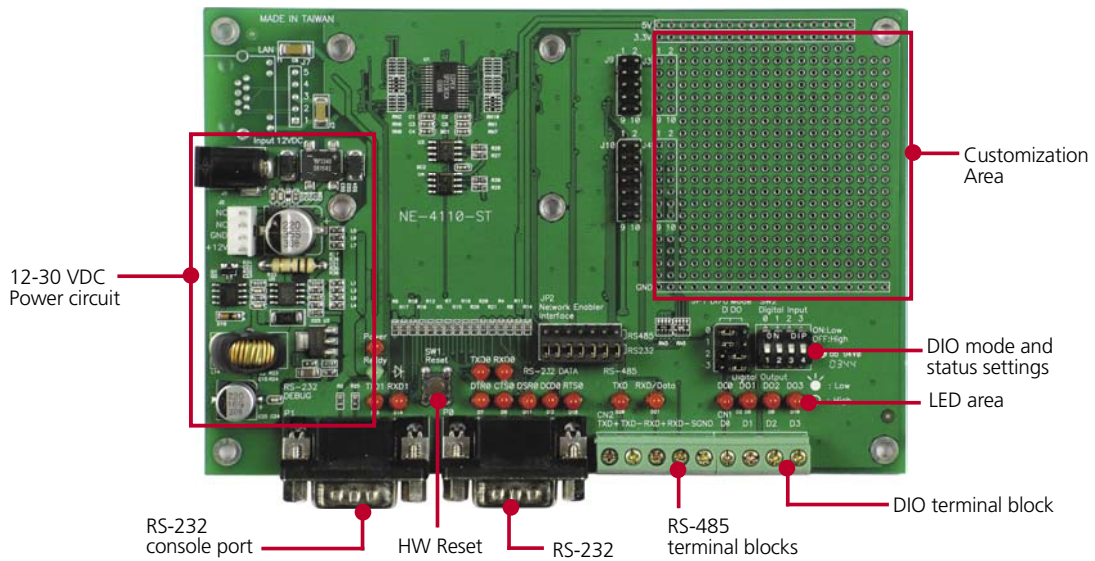




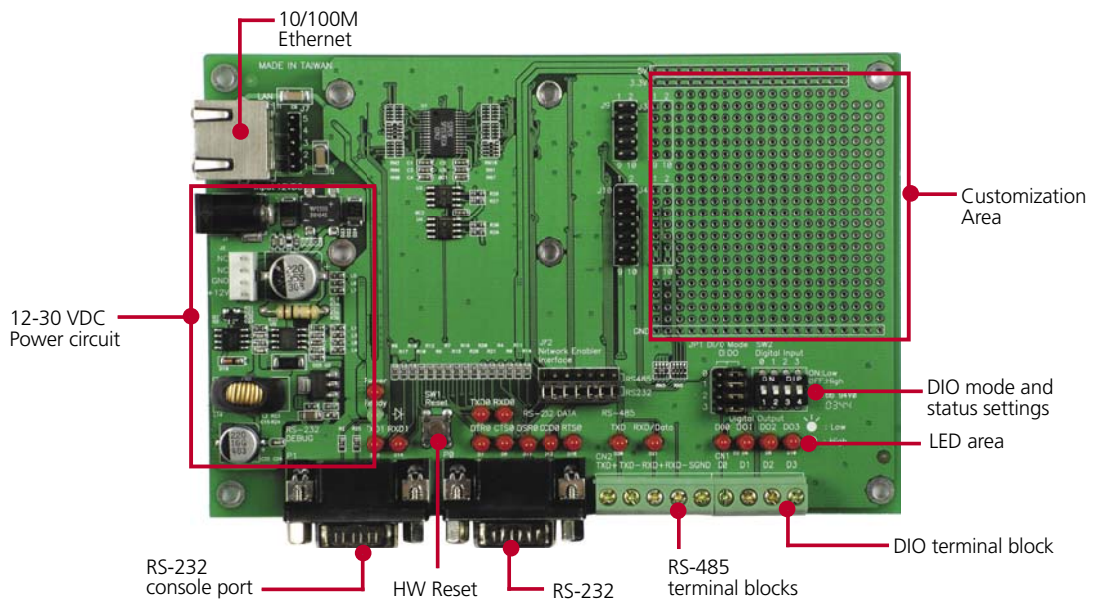
## How to Select the NE-4100 Series Starter Kit

Starter Kit	NE-4100 Series Module		
	Standard Version	Programmable Version	Serial Command Version
NE-4100-ST	NE-4100T	NE-4100T-P	NE-4100T-CMD
NE-4110-ST	NE-4110S	NE-4110S-P	NE-4110S-CMD
	NE-4110A	NE-4110A-P	NE-4110A-CMD
NE-4120-ST	NE-4120S	NE-4120S-P	NE-4120S-CMD
	NE-4120A	NE-4120A-P	NE-4120A-CMD

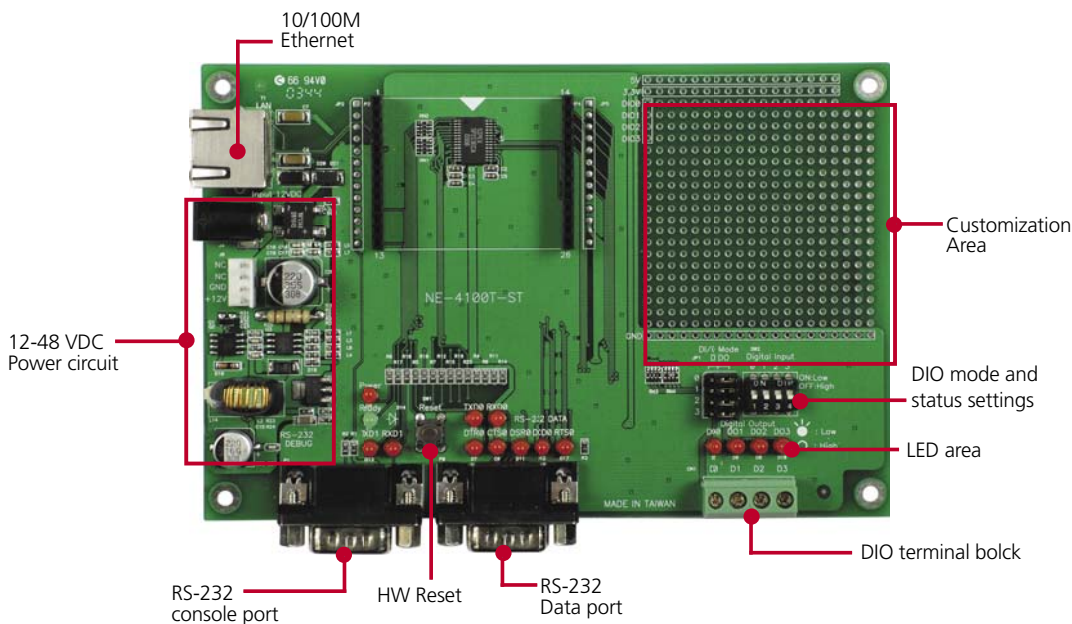
## NE-4110-ST Evaluation Board



## NE-4120-ST Evaluation Board



## NE-4100-ST Evaluation Board



## Ordering Information

- NE-4110S:** 100 Mbps Network Enabler for RS-232 devices, with RJ45 Ethernet connector
- NE-4110A:** 100 Mbps Network Enabler for RS-422/485 devices, with RJ45 Ethernet connector
- NE-4120S:** 100 Mbps Network Enabler for RS-232 devices, with 5-pin Ethernet pin header
- NE-4120A:** 100 Mbps Network Enabler for RS-422/485 devices, with 5-pin Ethernet pin header
- NE-4100T:** 100 Mbps Network Enabler for TTL devices, with DIL package
- NE-4110S-P:** Programmable Version, 100 Mbps Network Enabler for RS-232 devices, with RJ45 Ethernet connector
- NE-4110A-P:** Programmable Version, 100 Mbps Network Enabler for RS-422/485 devices, with RJ45 Ethernet connector
- NE-4120S-P:** Programmable Version, 100 Mbps Network Enabler for RS-232 devices, with 5-pin Ethernet pin header
- NE-4120A-P:** Programmable Version, 100 Mbps Network Enabler for RS-422/485 devices, with 5-pin Ethernet pin header
- NE-4100T-P:** Programmable Version, 100 Mbps Network Enabler for TTL devices, with DIL package
- NE-4110S-CMD:** Serial Command Version, 100 Mbps Network Enabler for RS-232 devices, with RJ45 Ethernet connector
- NE-4110A-CMD:** Serial Command Version, 100 Mbps Network Enabler for RS-422/485 devices, with RJ45 Ethernet connector
- NE-4120S-CMD:** Serial Command Version, 100 Mbps Network Enabler for RS-232 devices, with 5-pin Ethernet pin header
- NE-4120A-CMD:** Serial Command Version, 100 Mbps Network Enabler for RS-422/485 devices, with 5-pin Ethernet pin header
- NE-4100T-CMD:** Serial Command Version, 100 Mbps Network Enabler for TTL devices, with DIL package
- NE-4110-ST:** Starter Kit for NE-4110 Series
- NE-4120-ST:** Starter Kit for NE-4120 Series
- NE-4100-ST:** Starter Kit for NE-4100T Series