



BTP-1553: MIL-STD-1553 Portable Analyzer

Complete Turnkey Analyzer System for Lab and Flight Line Test and Maintenance

Features

GUI Features

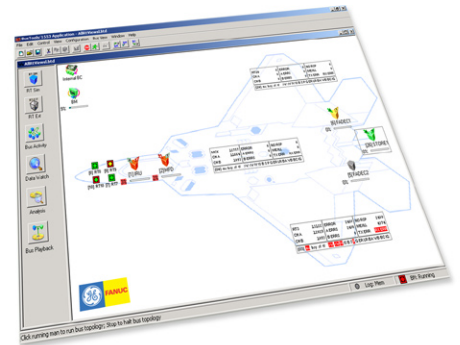
- Full BC, 31 RT and monitor capability
- Graphical or ASCII file setup of BC and RT simulations
- Multiple real-time data displays
- Log 100% of bus traffic on multiple channels to disk and/or memory
- Three levels of simultaneous data logging
- Selective Data Watch™ for multiple parameters
- ASCII file import/export of Engineering Unit (ICD) definitions
- Major/Minor frame BC simulation
- Conditional branching on message data
- RoHS/EPEAT Compliant

BTP-1553 is a complete turnkey analyzer comprised of an integrated package with BT-1553, a 1553 avionics interface card, a semi-rugged portable computer host, and cables for immediate use with no user hassles around interrupts, driver conflicts, and other integration issues.

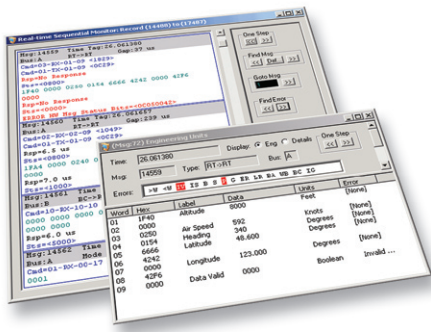
Analysis, Test and Simulation Software BusTools/1553 is an integrated, Windows-based, application solution for MIL-STD-1553 test, analysis and simulation. This software harnesses the power of GE Fanuc Intelligent Platforms' multifunction R15-EC ExpressCard interface for simplified control over simulation, display, data logging, playback and protocol analysis of MIL-STD-1553/1760 A and B networks.

Using an intuitive GUI interface designed for interactivity, you can quickly monitor and analyze bus traffic, create/modify messages while running, display multiple real-time engineering unit values and user-formatted graphs. Additional features include controlling multiple buses simultaneously, injecting/detecting errors and rapid filtering of displayed or recorded data for both live and replay modes.

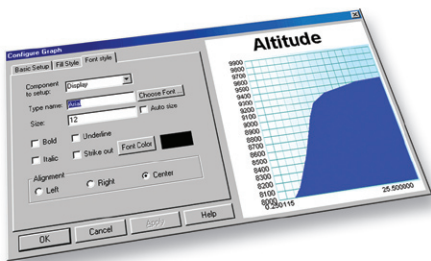
Quickly select individual data words from any bus message with our unique Selective Data Watch feature. With integrated high/low limit checking, real-time engineering unit display, DDE output, automatic limit event logging and the snapshot feature, Selective Data Watch can save hours when tracking down elusive system problems.



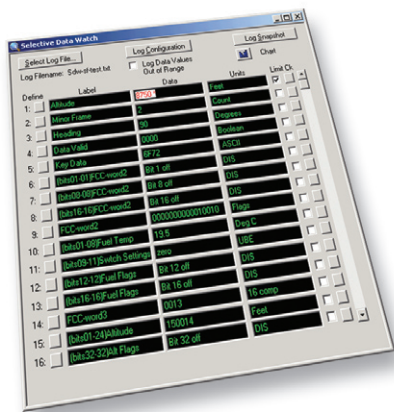
BTP-1553: MIL-STD-1553 Portable Analyzer



Real-time data in engineering units



Real-time and historical charting



Selective data watch quickly provides display, limit checking, logging and output of individual data words

Software Features

Flexible Real-time Data Displays

- Quickly create multiple, concurrent displays
- Data displayed in engineering units with labels
- Simplified filtering
- User-formatted charting – real-time and historical

Advanced Archive and Playback

- Log 100% of bus traffic on multiple channels to disk and/or memory
- Three different simultaneous logging features
- Pre and post processing filtering of data to word count
- Multi-level event triggering
- Real-time bus playback with RT edit mode
- PAT – Parallel Analysis Tool displays multiple views of archived data

System Integration Tool – Selective Data Watch

- Real-time display of individual data words from any network message
- Designed for interactive use
- Quick selection of up to 64 data words with no programming
- Upper and lower limit checking with notification
- Out-of-limit log file with snapshot feature

Bus Analysis

- Analyze 1553 bus protocol activity
- At-a-glance Bus Activity Screen
- Detailed display of message status, errors, data
- Inject/detect errors at the message and word levels
- IRIG/GPS synchronization capability. IRIG B decode optional.
- Graphical “Topology” representation and icon controls for customized bus schematic layouts, ease of use and trouble shooting of cables/ transformer connections

Ordering Information

BTP-1553-2MW Rugged Portable Analyzer, MIL-STD-1553, multifunction, two dual-redundant channels with IRIG

Related Products

R15-EC RoHS Dual Port MIL-STD-1553 ExpressCard Interface

BT-1553 MIL-STD-1553 Bus Analysis & Data Logging software for Windows (multi-function boards only)

About GE Fanuc Intelligent Platforms

GE Fanuc Intelligent Platforms is a leading global provider of embedded computing solutions for a wide range of industries and applications. Our comprehensive product offering includes many types of I/O, single board computers, high performance signal processors, fully integrated, rugged systems including flat panel displays, plus high speed networking and communications products. The company is headquartered in the U.S. and has design, manufacturing and support offices throughout the world. Whether you're looking for one of our standard products or a fully custom solution, GE Fanuc Intelligent Platforms has the breadth, experience and 24/7 support to deliver what you need. For more information, visit www.gefanuc.com.

GE Fanuc Intelligent Platforms Information Centers

Americas:
1 800 322 3616 or 1 256 880 0444
Avionics Regional Managers: 1 805 879 3542

Asia Pacific:
+81 3 5544 3973

EMEA:
Germany: +49 821 5034-0
UK: + 44 1327 359444

Network Simulation

- Simulate all or part of your network
- Modify simulated data while running through Windows DLL
- Intuitive, interactive operation
- Major/Minor frame Bus Controller architecture
- Graphical, icon-based GUI programming
- Conditional BC branching
- Simple ASCII file formats for BC, RT and EU (ICD) definitions. Full ASCII conversions for archived data - allows easy export to spreadsheet applications.

ExpressCard Features

- 2 Independent MIL-STD-1553 Dual Redundant Channels
- ExpressCard

Connections

- Transition cabling provided via robust 36-pin Champ type connector with mechanical retention
- Input and output triggers
- Two bi-directional avionics discretes
- Transformer coupling
- Optional IRIG-B synchronization In/Out (AM or DC/TTU)
- Fixed output voltage

Multi-function Operational Modes

- Simultaneous BC, 31 RTs and BM

Semi-Rugged Computer Host Features

- Shock-mounted, Removable Hard Drive
- Drop and Spill-resistant
- Operation Environment Temp: 5°C to 35°C
- Storage Environment Temp: -20°C to 60°C
- Lithium ion battery pack
- AC Adapter: AC 100V-240V 50/60Hz, auto sensing/switching worldwide power supply
- Battery status reporting

