



BTP-ARINC: ARINC Portable Analyzer

Complete Turnkey Analyzer System for Flight Line Test and Maintenance

Features

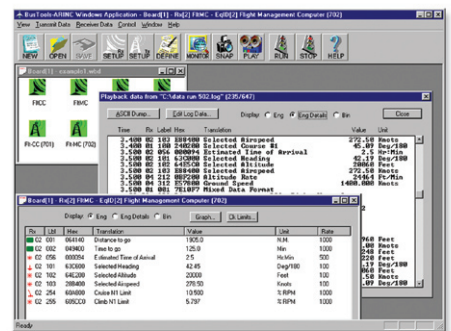
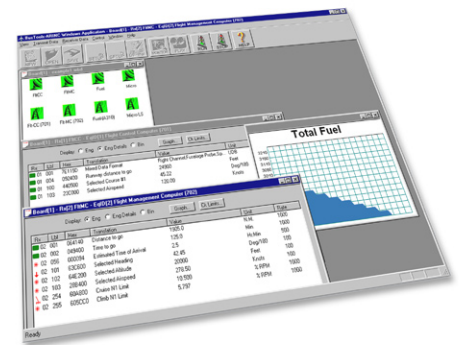
- Real-time display of individual channel labels
- Log 100% of bus traffic to disk and/or memory
- Integrated software/hardware solution
- Flexible real-time displays
- User-defined custom labels, data fields and scaling
- Discrete I/O control
- Multiple boards supported
- Advanced engineering unit conversion with context-sensitive translation
- Control, log, display multiple channels simultaneously
- RoHS/EPEAT Compliant

BTP-ARINC is a complete turnkey analyzer comprised of an integrated package with BT-ARINC, an ARINC avionics interface card, a semi-rugged portable computer host, and cables for immediate use with no user hassles around interrupts, driver conflicts, and other integration issues.

Analysis, Test and Simulation Software

BusTools/ARINC is GE Fanuc Intelligent Platforms' advanced, easy-to-use application solution for ARINC 429, 561 6-wire, 573, 717 and CSDB databus test and simulation. By harnessing the power of GE Fanuc Intelligent Platforms' family of intelligent interfaces for PC platforms, *BusTools/ARINC* provides exceptional flexibility for the control, generation, display, recording and playback of protocol data. From an intuitive GUI interface, quickly configure GE Fanuc Intelligent Platforms' Systems ExpressCard hardware. Create and transmit messages, display real-time data, chart variables, log all traffic to disk and replay logged data.

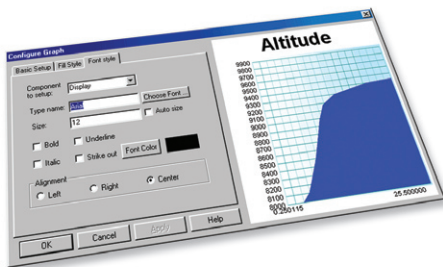
GE Fanuc Intelligent Platforms' advanced engineering unit conversion system streamlines data entry and simplifies traffic analysis. Standard ARINC 429-16 label conversions are provided, and you can easily create/import/export custom equipment ID/label databases. Use custom labels with one or more BCD, BNR, discrete or bit-encoded fields. New context-sensitive translation provides even more flexibility when these standard and customized data field names, units and conversion factors are used for analysis and data entry.



BTP-ARINC: ARINC Portable Analyzer



Filter by Label, SDI and Channel



Real-time and Historical Charting

BusTools/ARINC Features

Meaningful Real-time Data Displays

- Engineering unit, use-defined, hex or binary displays
- User-formatted charts – scrolling or historical
- View data by individual channel or merged together
- Custom labels with discrete descriptors and split fields
- Easy-to-use label and/or SDI filtering
- Multiple views – channel, label, value, units, rate, SSM, SDI
- Automated dropped label and data limit checking

Flexible, User-defined Fields

- Display meaningful data with advanced engineering unit conversion
- Create custom Equipment ID/label databases
- Divide data words into BCD, BNR, discrete and user-bit-encoded fields
- Use custom databases for all display and entry
- Split data words can utilize multiple scale factors and Context-Sensitive Translation

Data Logging (Analysis)

- Log all received (filtered) data to disk and/or memory
- Display in engineering units, discrete descriptors and bit-encoded values
- Merged playback display of all channels
- Replay logged data over databuses (editor available)

Simulation/Control

- Icon-driven GUI interface controls Rx and Tx
- Enter data in same engineering units, hex or binary, as displayed
- Create/edit individually scheduled messages while receiving and transmitting
- Save and restore test configurations with user notes
- Control/monitor I/O discretes

ExpressCard Features

- ARINC 429 dual port interface, up to 7 Rx and 4 TX channels
- ExpressCard/54 extended module

Connections

- Cabling to 37-pin D-type receptacle connector provided with mechanical retention
- Optional IRIG-B synchronization In/Out (AM or DC/TTL)

Semi -Rugged Computer Host Features

- Shock-mounted, removable hard drive
- Drop and spill-resistant
- Operation environment temp: 5°C to 35°C
- Storage environment temp: -20°C to 60°C
- Lithium ion battery pack
- AC adapter: AC 100V-240V 50/60Hz, auto sensing/switching worldwide power supply
- Battery status reporting

Ordering Information

BTP-ARINC-74-W Semi-rugged Portable Analyzer, ARINC 429, 7 Rx, 4Tx, IRIG RX and TX

Related Products

RAR-EC RoHS Dual Port ARINC 429 ExpressCard Interface

BT-ARINC ARINC 429 Bus Analysis & Data Logging software for Windows (multi-function boards only)

About GE Fanuc Intelligent Platforms

GE Fanuc Intelligent Platforms is a leading global provider of embedded computing solutions for a wide range of industries and applications. Our comprehensive product offering includes many types of I/O, single board computers, high performance signal processors, fully integrated, rugged systems including flat panel displays, plus high speed networking and communications products. The company is headquartered in the U.S. and has design, manufacturing and support offices throughout the world. Whether you're looking for one of our standard products or a fully custom solution, GE Fanuc Intelligent Platforms has the breadth, experience and 24/7 support to deliver what you need. For more information, visit www.gefanuc.com.

GE Fanuc Intelligent Platforms Information Centers

Americas:
1 800 322 3616 or 1 256 880 0444
Avionics Regional Managers: 1 805 879 3542

Asia Pacific:
+81 3 5544 3973

EMEA:
Germany: +49 821 5034-0
UK: + 44 1327 359444

Additional Resources

For more information, please visit the GE Fanuc Intelligent Platforms web site at:

www.gefanuc.com

