

BusTools/ARINC

Features

- Real-time display of individual channel labels
- Log 100% of bus traffic to disk and/or memory
- Integrated software/hardware solution
- Flexible real-time displays
- User-defined custom labels, data fields and scaling
- Discrete I/O control
- Multiple boards supported
- Advanced engineering unit conversion with context-sensitive translation
- Control, log, display multiple channels simultaneously

Powerful Hardware

- Available for:
 - PCI (CEI-520/520A//530/830-X/R830RX-X)
 - CompactPCI (CEI-620/830-3/R830RX-3)
 - PCMCIA (CEI-715)
 - ExpressCard (RAR-EC)
 - PC/104 (CEI-420/420A)
 - PC/104 Plus (CEI-430)
 - PC/AT (CEI-220)
 - PA-100 platforms
- Control up to 32 simultaneous channels per board
- Windows® XP, 2000, NT supported

Analysis, Test and Simulation Software

BusTools/ARINC is GE Fanuc Intelligent Platforms' advanced, easy-to-use application solution for ARINC 429, 561 6-wire, 573, 717 and CSDB databus test and simulation. By harnessing the power of GE Fanuc Intelligent Platforms' family of intelligent interfaces for PC platforms, *BusTools/ARINC* provides exceptional flexibility for the control, generation, display, recording and playback of protocol data. From an intuitive GUI interface, quickly configure GE Fanuc Intelligent Platforms PCI, CompactPCI, PCMCIA, PC/AT and PC/104 hardware. Create and transmit messages, display real-time data, chart variables, log all traffic to disk and replay logged data.

GE Fanuc Intelligent Platforms' advanced engineering unit conversion system streamlines data entry and simplifies traffic analysis. Standard ARINC 429-16 label conversions are provided, and you can easily create/import/export custom equipment ID/label databases. Use custom labels with one or more BCD, BNR, discrete or bit-encoded fields. New context-sensitive translation provides even more flexibility when these standard and customized data field names, units and conversion factors are used for analysis and data entry.



BusTools/ARINC

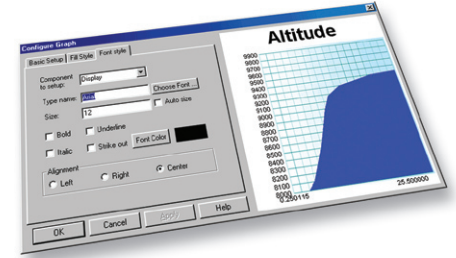
BusTools/ARINC Features

Meaningful Real-time Data Displays

- Engineering unit, use-defined, hex or binary displays
- User-formatted charts – scrolling or historical
- View data by individual channel or merged together
- Custom labels with discrete descriptors and split fields
- Easy-to-use label and/or SDI filtering
- Multiple views – channel, label, value, units, rate, SSM, SDI
- Automated dropped label and data limit checking



Filter by Label, SDI and Channel

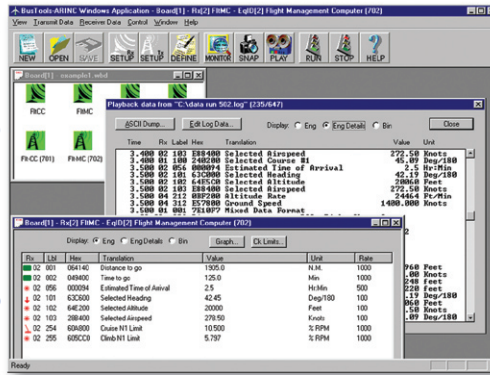


Real-time and Historical Charting

Flexible, User-defined Fields

- Display meaningful data with advanced engineering unit conversion
- Create custom Equipment ID/label databases
- Divide data words into BCD, BNR, discrete and user-bit-encoded fields
- Use custom databases for all display and entry
- Split data words can utilize multiple scale factors and Context-Sensitive Translation

Topology Window



Real-time Label Displays

Display logged data with custom labels, engineering units, discrete descriptors and user bit-encoding.

Data Logging (Analysis)

- Log all received (filtered) data to disk and/or memory
- Display in engineering units, discrete descriptors and bitencoded values
- Merged playback display of all channels
- Replay logged data over databuses (editor available)

Simulation/Control

- Icon-driven GUI interface controls Rx and Tx
- Enter data in same engineering units, hex or binary as displayed
- Create/edit individually scheduled messages while receiving and transmitting
- Save and restore test configurations with user notes
- Control/monitor I/O discretes

Ordering Information

BT-ARINC

BusTools/ARINC GUI software for Bus Analysis, Simulation and Data Logging. Windows XP/2000/NT.

About GE Fanuc Intelligent Platforms

GE Fanuc Intelligent Platforms is a leading global provider of embedded computing solutions for a wide range of industries and applications. Our comprehensive product offering includes many types of I/O, single board computers, high performance signal processors, fully integrated, rugged systems including flat panel displays, plus high speed networking and communications products. The company is headquartered in the U.S. and has design, manufacturing and support offices throughout the world. Whether you're looking for one of our standard products or a fully custom solution, GE Fanuc Intelligent Platforms has the breadth, experience and 24/7 support to deliver what you need. For more information, visit www.gefanuc.com.

GE Fanuc Intelligent Platforms Information Centers

Americas:
1 800 322 3616 or 1 256 880 0444

Asia Pacific:
+81 3 5544 3973

EMEA:
Germany: +49 821 5034-0
UK: + 44 1327 359444

Additional Resources

For more information, please visit the GE Fanuc Intelligent Platforms web site at:

www.gefanuc.com

