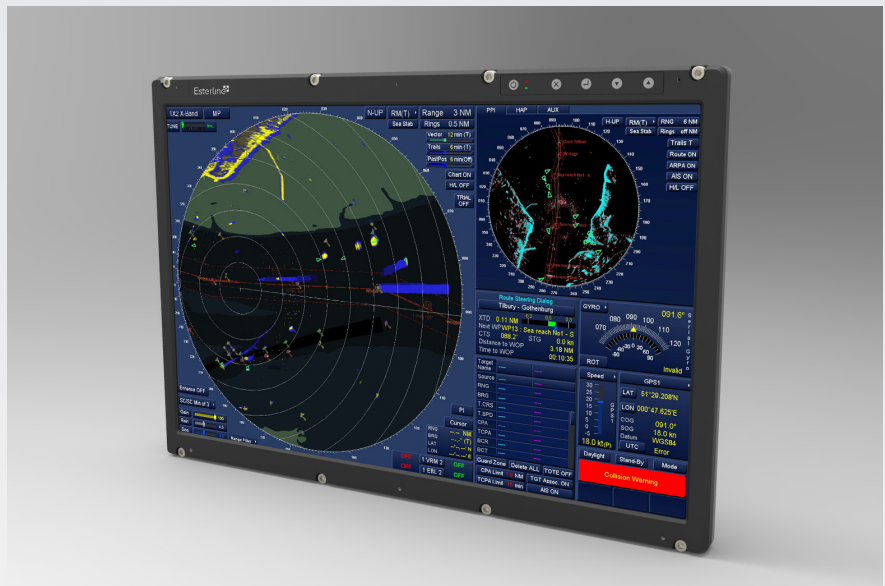


FD-361

Multi-touch workstation display



The FD-361 is a 24" WUXGA Main Console display offering a brightness of 440 cd/m² to ensure full sunlight readability under all expected ambient lighting conditions typically encountered on board of Navy ships. The FD-361 features a glove compatible projected-capacitive multi-touch screen supporting up to 4 simultaneous touches and gestures. Combined with LCD Flicker Compensation (LFC) technology and an extremely compact, lightweight design, it is perfectly suited for mission-critical operations in naval environments.

Product specifications

	FD-361
Panel size	24"
Resolution	1920 x 1200 WUXGA
Backlight	LED
Brightness	440 cd/m ² (128 fL) typical
Dimming ratio	2000:1
Contrast Ratio	1000:1
Viewing angle	± 89° horizontal and vertical
Touch	Glove compatible Projected Capacitive multi touch (4 simultaneous touches)
Vibration operational	MIL-STD-167-1 Type 1
Vibration non-operational (shipping & handling)	MIL-STD-810G Meth 514.6, Cat 2 and Cat 9
Shock	MIL-S-901D Grade A, Class I hard mount
Operational Temperature	MIL-STD-810G Meth 501.5 and Meth 502.5, Proc II high temperature: + 50°C (122°F) low temperature: 0°C (32°F)
Storage Temperature	MIL-STD-810G Meth 501.5 and Meth 502.5, Proc I high temperature: + 70°C (158°F) low temperature: - 40°C (-40°F)
Temperature shock	MIL-STD-810G Meth 503.5, Proc I-C 3 cycles from - 20°C up to + 50°C
Relative Humidity	MIL-STD-810G Meth 507.5, Proc II max 95%
Enclosure (Drip)	MIL-STD-810G Meth 506.5, Proc III
Altitude low pressure	MIL-STD-810G Meth 500.5, Proc I & II operating: between 4,200 ft and -1,900ft non-operating: up to 15,000 ft
Rapid decompression	MIL-STD-810G Meth 500.5, Proc III from 5,000 ft to 35,000 ft
Salt Fog	MIL-STD-810G Meth 509.5 on display FRONT
Sand & Dust	MIL-STD-810G Meth 510.5, Proc I & II on display FRONT
EMI / EMC	MIL-STD-461F - NAVY applications (Surface ships & Submarine internal)
Signal Inputs	DVI-D / VGA
USB	USB2.0 for Touch communication
Power	12 VDC 10% (Switchcraft connector RASPC10PS)
Power consumption	maximum 55W (at full display brightness)
Controls	UP / DOWN / SEL / QUIT / STANDBY in conjunction with OSD
Indicators	Green 'Power' LED, Red 'Fault' LED
OSD	On Screen Display & web interface
Weight	8.4 ± 0.25 kg (18.52 ± 0.55 lbs)
Finishing	Bezel color: Black RAL 9005 Surface treatment: ROHS compliant Chromated Cr3 (MIL-DTL-5541 type II Class 3)
Options	Lighted Writing Surface (LWS-361)

DEF - FD-361 SpecSheet - Generated on: 24-04-2015 / 001

Technical specifications are subject to change without prior notice.
Please check www.esterline.com for the latest information.

Esterline BVBA
President Kennedypark 35 A
B-8500 Kortrijk
Tel: +32 56 23 3067
www.esterline.com

Esterline
Control &
Communication Systems

Featuring CODIS Products