

# PANEL6153

15" TFT High Brightness Industrial LCD Monitor



1. Exit
2. Menu
3. SEL-
4. SEL+
5. Power LED
6. Power switch



I/O connections

7. T/S port (D-sub optional)
8. DC power input
9. DVI
10. VGA
11. Video
12. S-video

## Features

- ▶ 15" TFT 250 nits high brightness XGA LCD
- ▶ NEMA 4/12(IP65)- compliant panel mounting flat panel monitor (PANEL6153-P)
- ▶ NEMA 4/12(IP65)- compliant open frame flat panel mounting (PANEL6153-O)
- ▶ Supports panel mount, wall mount, rackmount and VESA arm
- ▶ Resistive and capacitive types of touchscreen
- ▶ Supports full range screw-type (locked) AC-in or 24V DC-in (option)
- ▶ Supports multi-signal inputs: VGA, S-video, video and DVI



Side view

## Introduction

The PANEL6153 is an ultra slim industrial LCD monitor equipped 15-inch 250 nits high brightness XGA LCD display and supports multi-signal interfaces including DVI, VGA, S-Video, Video. Featuring NEMA4/IP65 compliant front bezel, screw-type adaptor plug design, and 12/24V DC-In means it is fit for all kinds of industrial environments. Moreover, the PANEL6153 supports panel,

wall, rack or VESA FPMPI (Video Electronics Standards Association Flat Panel Monitor Physical Mounting Interface) mounting. With the compact mechanism design, users can enjoy free from space constraint. The PANEL6153 is especially suitable for POI/POS, excellent HMI, media-display applications and all kinds of heavy-duty industrial fields.

## Specifications

Front Bezel	NEMA 4/12 (IP65)-compliant, metal front bezel	
Mounting	Panel mounting, wall mounting rackmount or VESA FPMPI mounting (video electronics standards association Flat Panel monitor physical mounting interface)	
LCD Panel	Display	Type 15" TFT LCD
	Max. Resolution	1024 x 768
	Max. Colors	16.2M
	Active Area (mm)	304.128 x 228.096
	Pixel Pitch (mm)	0.297 x 0.297
	Response Time	12ms
	Backlight	2 CCFL
	Backlight MTBF	30,000 hrs
	Viewing Angle	(H) 130 (V) 120
Display Control	Contrast Ratio	500 (TYP.)
	Brightness (cd/m <sup>2</sup> )	250 nits
	OSD (on screen display)	
Display Mode	VGA 640 x 480 (60 / 72Hz), VGA 640 x 350 (70Hz), VGA 720 x 400 (70Hz), XGA 1024 x 768 (60/70/75Hz), SVGA 800 x 600 (60 / 72Hz)	

Input Signal	VGA Video: R.G.B Analog 0.7v Peak-to-Peak Video S-Video DVI Touchscreen: Serial RS-232	
I/O Connectors	D-Sub 9 pin(male) RS-232 x 1 for touchscreen version D-Sub 15 pin x 1 (female) for VGA input RCA x 1 for video, S-Video x 1 for video, DVI x 1 Screw-type DC power input	
Power Adapter	Screw-type external AC / DC power adapter	
Touchscreen	Thickness	Resistive: 3.2mm Capacitive: 3.4mm
	Light Transmission	Resistive: 80% Capacitive: 90%
Power	Resistive: +5V @ 100mA	
Consumption	Capacitive: +5V @ 100mA	
Touch Life	Resistive: 35million touches Capacitive: 200million touches Controller interface: RS-232 D-type 9-pin male connector	

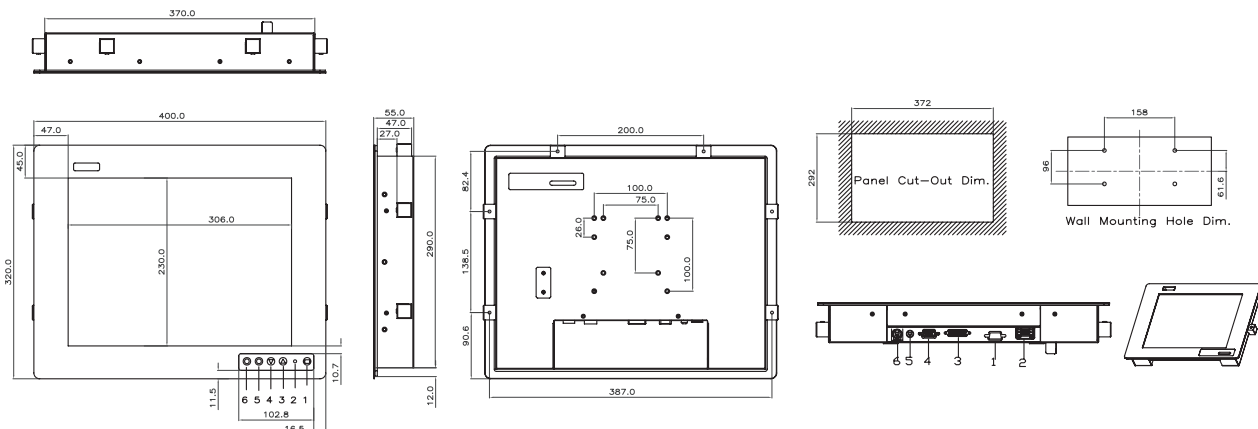
<b>Dimensions</b>	PANEL6153-P: 400mm (15.75") (W) x 45.5mm (1.79") (D) x 323mm (12.7") (H) PANEL6153-O: 400mm(15.75") (W) x 45.5mm (1.79") (D) x 323mm (12.7") (H)
<b>Weight</b>	4.8 kg (10.58 lb)(PANEL6153-P)
<b>Environmental</b>	Operation temperature: 0°C - 50°C (32°F - 122°F) Storage temperature: -20°C - 60°C (-4°F - 140°F) Relative humidity: 20% ~ 90%, non-condensing
<b>Certificate</b>	CE

## Ordering Information

<b>PANEL6153</b>		
<b>AC Power</b>	<b>Panel Mount Monitor</b>	
	Capacitive PANEL6153PC-AC	
	Resistive PANEL6153PR-AC	
	Glass PANEL6153PG-AC	
	<b>Open Frame Monitor</b>	
	Capacitive PANEL6153OC-AC	
<b>24V<sub>DC</sub> Power</b>	<b>Panel Mount Monitor</b>	
	Capacitive PANEL6153PC-24V <sub>DC</sub>	
	Resistive PANEL6153PR-24V <sub>DC</sub>	
	Glass PANEL6153PG-24V <sub>DC</sub>	
	<b>Open Frame Monitor</b>	
	Capacitive PANEL6153OC-24V <sub>DC</sub>	
<b>PANEL6153L (Input: VGA and DVI only)</b>		
<b>AC Power</b>	<b>Panel Mount Monitor</b>	
	Capacitive PANEL6153LPC-AC	
	Resistive PANEL6153LPR-AC	
	Glass PANEL6153LPG-AC	
	<b>Open Frame Monitor</b>	
	Capacitive PANEL6153LOC-AC	
Resistive PANEL6153LOR-AC		
Glass PANEL6153LOG-AC		

\*Specifications and certifications are limited to optional.

## Dimensions



## Optional Accessories

ARM-VM-101	VESA ARM (clamp type)
ARM-VM-105	VESA ARM (wall mount type)
Wall mounting & desktop stand	
Rack-mount kit	



Stand kit



Phoenix-type power input



Screw-type power input

Medical Panel Computers

PANEL2000 Slim Client Panel Computers

VTA Series

GOT Fanless Touch Panel Computers

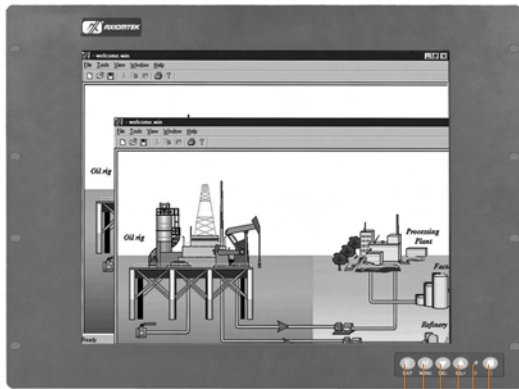
PANEL 1000/5000 Industrial Panel Computers

Industrial Workstations

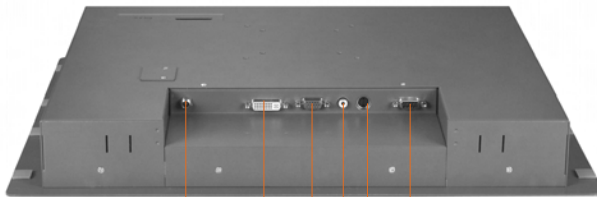
PANEL6000 Industrial Flat Panel Monitors

# PANEL6173

17" TFT High Brightness Industrial LCD Monitor



1. Exit
2. Menu
3. SEL-
4. SEL+
5. Power LED
6. Power switch



I/O connections

7. DC Power input
8. DVI
9. VGA
10. Video
11. S-video
12. T/S port (D-sub optional)

## Features

- ▶ 17" TFT 300 nits high brightness SXGA LCD
- ▶ NEMA 4/12(IP65)- compliant panel mounting flat panel monitor (PANEL6173-P)
- ▶ NEMA 4/12(IP65)- compliant open frame flat panel mounting (PANEL6173-O)
- ▶ Supports panel mount, wall mount, rackmount and VESA arm
- ▶ Resistive and capacitive types of touchscreen
- ▶ Supports full range screw-type (locked) AC-in or 24V DC-in (option)
- ▶ Supports multi-signal inputs: VGA, S-video, video and DVI



Side view

## Introduction

The PANEL6173 is an ultra slim industrial LCD monitor, which adopts 17-inch 300 nits high brightness SXGA LCD display and supports multi-signal interfaces including DVI, VGA, S-Video, Video. Featuring NEMA4/IP65 compliant front bezel, screw-type adaptor plug design, and 12/24V DC-In means it is fit for all kinds of industrial environments. Moreover, the PANEL6173 supports panel,

wall, rack or VESA FPMPI (Video Electronics Standards Association Flat Panel Monitor Physical Mounting Interface) mounting. With the compact mechanism design, users can enjoy free from space constraint. It is especially suitable for POI/POS, excellent HMI and all kinds of heavy-duty industrial fields.

## Specifications

Front Bezel	NEMA 4/12 (IP65)-compliant, metal front bezel	
Mounting	Panel mounting, wall mounting, rackmount or VESA FPMPI mounting (video electronics standards association Flat Panel monitor physical mounting interface)	
LCD Panel	Display	Type 17" TFT LCD
	Max. Resolution	1280 x 1024
	Max. Colors	16.2M
	Active Area (mm)	337.92 x 270.33
	Pixel Pitch (mm)	0.264 x 0.264
	Response Time	5ms
	Backlight	4 CCFL
	Backlight MTBF	50,000 hrs
Display Control	Viewing Angle	(H) 160°; (V) 160°
	Contrast Ratio	800 (TYP.)
	Brightness (cd/m <sup>2</sup> )	300 nits
	OSD (on screen display)	
Display Mode	VGA 640 x 480 (60 / 72Hz), VGA 640 x 350 (70Hz), VGA 720 x 400 (70Hz), XGA 1024 x 768 (60/70/75Hz), SVGA 800 x 600 (60 / 72Hz) SXGA 1280 x 1024 (60/70/75Hz)	

Input Signal	VGA Video: R.G.B Analog 0.7v Peak-to-Peak	
	Video	
	S-Video	
	DVI	
I/O Connectors	Touchscreen: Serial RS-232	
	D-Sub 9 pin(male) RS-232 x 1 for touchscreen version	
	D-Sub 15 pin x 1 (female) for VGA input	
	RCA x 1 for video, S-Video x 1 for video, DVI x 1 for video	
Power Adapter	Screw-type DC power input	
	Screw-type external AC / DC power adapter	
Touchscreen	Thickness	Resistive: 3.2mm, Capacitive: 3.4mm
	Light Transmission	Resistive: 80% Capacitive: 90%
	Power	Resistive: +5V @ 100mA
	Consumption	Capacitive: +5V @ 100mA
	Touch Life	Resistive: 35million touches Capacitive: 200million touches
	Controller interface: RS-232 D-type 9-pin male connector	

Dimensions	PANEL6173-P: 19" (482mm) (W) x 2.36" (60mm) (D) x 14.2" (360mm) (H)
	PANEL6173-O: 19" (482mm) (W) x 2.36" (60mm) (D) x 14.2" (360mm) (H)
Weight	5.5kg (12.12lb) (PANEL6173-P)
Environmental	Operation temperature: 0°C - 50°C (32°F - 122°F)
	Storage temperature: -20°C - 60°C (-4°F - 140°F)
	Relative humidity: 20% ~ 90%, non-condensing
Certificate	CE

## Ordering Information

### PANEL6173

AC Power	Panel Mount Monitor	
	Capacitive	PANEL6173PC-AC
	Resistive	PANEL6173PR-AC
	Glass	PANEL6173PG-AC
	Open Frame Monitor	
	Capacitive	PANEL6173OC-AC
24V <sub>dc</sub> Power	Panel Mount Monitor	
	Capacitive	PANEL6173PC-24V <sub>dc</sub>
	Resistive	PANEL6173PR-24V <sub>dc</sub>
	Glass	PANEL6173PG-24V <sub>dc</sub>
	Open Frame Monitor	
	Capacitive	PANEL6173OC-24V <sub>dc</sub>

### PANEL6173L (Input: VGA and DVI only)

AC Power	Panel Mount Monitor	
	Capacitive	PANEL6173LPC-AC
	Resistive	PANEL6173LPR-AC
	Glass	PANEL6173LPG-AC
	Open Frame Monitor	
	Capacitive	PANEL6173LOC-AC
AC Power	Panel Mount Monitor	
	Capacitive	PANEL6173LPC-AC
	Resistive	PANEL6173LPR-AC
AC Power	Open Frame Monitor	
	Capacitive	PANEL6173LOC-AC
	Resistive	PANEL6173LOR-AC

## Optional Accessories

ARM-VM-101	VESA ARM (clamp type)
ARM-VM-105	VESA ARM (wall mount type)
Wall mounting & desktop stand	



Stand kit



Various mounting ways  
Panel/ Wall/ VESA

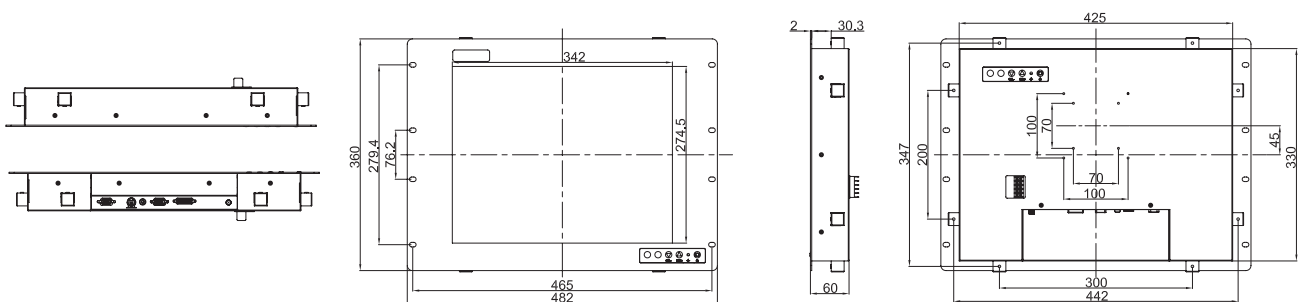


Screw-type power input



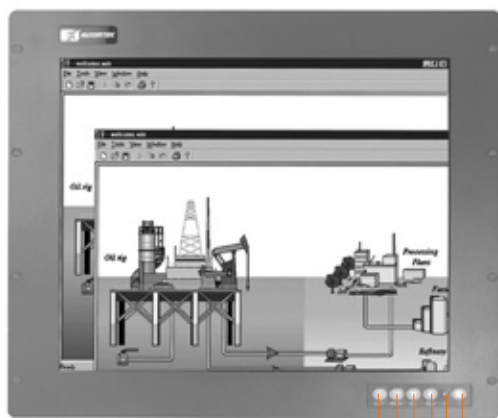
Phoenix-type power input

## Dimensions



# PANEL6192

19" TFT High Brightness Industrial LCD Monitor



1. Exit
2. Menu
3. SEL-
4. SEL+
5. Power LED
6. Power switch



I/O connections

- |                   |                               |
|-------------------|-------------------------------|
| 7. DC power input | 10. Video                     |
| 8. DVI            | 11. S-video                   |
| 9. VGA            | 12. T/S port (D-sub optional) |

## Features

- ▶ 19" TFT 300 nits high brightness SXGA LCD
- ▶ NEMA 4/12 (IP65)- compliant panel mounting flat panel monitor (PANEL6192-P)
- ▶ NEMA 4/12 (IP65)- compliant open frame flat panel mounting (PANEL6192-O)
- ▶ Supports panel mount, wall mount, rackmount and VESA arm
- ▶ Resistive and capacitive types of touchscreen
- ▶ Supports full range screw-type (locked) AC-in or 24V DC-in (option)
- ▶ Supports multi-signal inputs: VGA, S-video, video and DVI



Side view

## Introduction

The PANEL6192 is an ultra slim industrial LCD monitor, which adopts 19-inch 300 nits high brightness SXGA LCD display and supports multi-signal interfaces including DVI, VGA, S-Video, Video. Featuring NEMA4/12 (IP65) compliant front bezel, screw-type adaptor plug design, and 12/24V DC-In means it is fit for all kinds of industrial environments.

Moreover, the PANEL6192 supports panel, wall, rack or VESA FPMPI mounting (Video Electronics Standards Association Flat Panel Monitor Physical Mounting Interface). With the compact mechanism design, users can enjoy free from space constraint. It is especially suitable for POI/POS, media-display applications and all kinds of heavy-duty industrial fields.

## Specifications

Front Bezel	NEMA 4/12 (IP65)-compliant, metal front bezel	
Mounting	Panel mounting, wall mounting, rackmount or VESA FPMPI mounting (video electronics standards association Flat Panel monitor physical mounting interface)	
LCD Panel	Display Type	19" TFT LCD
	Max. Resolution	1280 x 1024
	Max. Colors	16.2M
	Active Area (mm)	376.32 x 301.06
	Pixel Pitch (mm)	0.294 x 0.294
	Response Time	6ms
	Backlight	4 CCFL
	Backlight MTBF	50,000 hrs
	Viewing Angle	(H) 140° (V) 130°
	Contrast Ratio	700 (TYP.)
	Brightness (cd/m2)	300 nits
Display Control	OSD (on screen display)	

Display Mode	VGA 640 x 480 (60/72Hz), VGA 640 x 350 (70Hz), VGA 720 x 400 (70Hz), XGA 1024 x 768 (60/70/75Hz), SVGA 800 x 600 (60/72/75Hz), SXGA 1280 x 1024 (75Hz)
Input Signal	VGA Video: R.G.B Analog 0.7v Peak-to-Peak Video S-Video DVI Touchscreen: Serial RS-232
I/O Connectors	D-Sub 9 pin(male) RS-232 x 1 for touchscreen version D-Sub 15 pin x 1 (female) for VGA input RCA x 1 for video, S-Video x 1 for video, DVI x 1
Video	Screw-type DC power input
Power Adapter	Screw-type external AC / DC power adapter

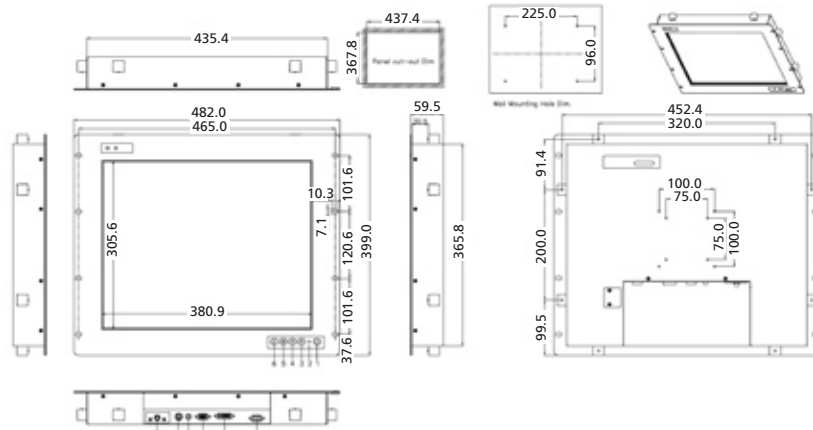
Touchscreen	Thickness	Resistive: 3.2mm, Capacitive: 3.0mm
	Light Transmission	Resistive: 80% Capacitive: 84%
	Power Consumption	Resistive: +5V@ 100mA Capacitive: +5V@ 100mA
	Touch Life	Resistive: 35million touches Capacitive: 225million touches Controller interface: RS-232 D-Type 9-pin male connector
Dimensions	PANEL6192-P: 18.97" (482mm) (W) x 2.34" (59.5mm) (D) x 15.7" (399mm) (H)	
	PANEL6192-O: 18.97" (482mm) (W) x 2.34" (59.5mm) (D) x 15.7" (399mm) (H)	
Weight	9.46 kg (20.86 lb) (PANEL6192-P)	
Environmental	Operation temperature: 0°C - 50°C (32°F - 122°F)	
	Storage temperature: -20°C - 60°C (-4°F - 140°F) Relative humidity: 20% ~ 90%, non-condensing	
Certificate	CE	

## Ordering Information

AC Power	Panel Mount Monitor	
	Capacitive	PANEL6192PC-AC
	Resistive	PANEL6192PR-AC
	Glass	PANEL6192PG-AC
	Open Frame Monitor	
	Capacitive	PANEL6192OC-AC
	Resistive	PANEL6192OR-AC
	Glass	PANEL6192OG-AC
24VDC Power	Panel Mount Monitor	
	Capacitive	PANEL6192PC-24VDC
	Resistive	PANEL6192PR-24VDC
	Glass	PANEL6192PG-24VDC
	Open Frame Monitor	
	Capacitive	PANEL6192OC-24VDC
	Resistive	PANEL6192OR-24VDC
	Glass	PANEL6192OG-24VDC

\*Specifications and certifications are limited to optional.

## Dimensions



## Optional Accessories

ARM-VM-101	VESA ARM (clamp type)
ARM-VM-105	VESA ARM (wall mount type)
Wall mounting & desktop stand	



Stand kit



Various mounting ways  
Panel/ Wall/ VESA



Screw-type power input



Phoenix-type power input

Medical Panel Computers

PANEL2000 Slim Client Panel Computers

VTA Series

GOT Fanless Touch Panel Computers

PANEL 1000/5000 Industrial Panel Computers

Industrial Workstations

PANEL6000 Industrial Flat Panel Monitors