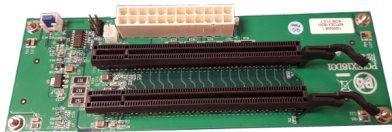


PCIe Backplanes and Cables

Dolphin offers a variety of cable and backplane offerings. These products are qualified and tested to work with Dolphin host adapters and switch products. The cables come in various lengths. Dolphin supports MiniSAS-HD, PCIe 3.0 and iPASS cables in copper and PCIe fiber cables. We also sell MPO/ MTP cables for our PXH84X based products.



IBP-G3X16-2

Two slot Gen3 PCIe backplane

- Two x16 Gen3 slots
- Gen1, Gen2 and Gen3 compliant
- Compliant to all Dolphin PXH transparent host cards
- Compliant to ATX & MicroATX footprint



PCIe3C-xM

PCIe 3.0 cables

- Cable Management Interface functionality (CMI)
- PCIe External cabling 3.0 spec
- Lengths 1 - 9 Meters
- Supports PXH and MXH SFF-8644 transparent boards



MSCxM

PCIe MiniSAS-HD cables

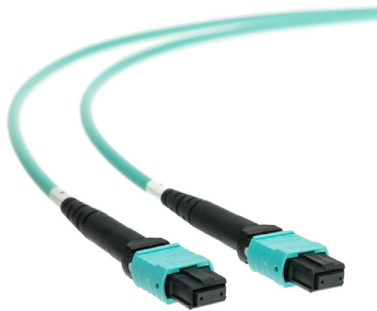
- No CMI support
- Lengths 1-9 Meters
- Supports PXH, MXH and MXS SFF-8644 transparent and non-transparent boards.



MSFCxM

PCIe Gen3 SFF-8644 Fiber cables

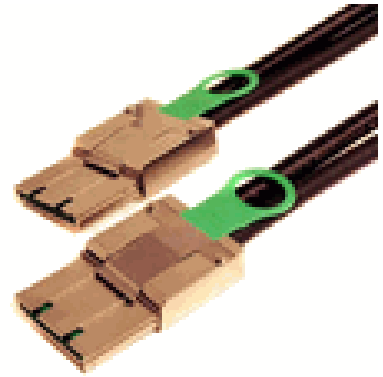
- No CMI Support
- Lengths 10, 50, 100 meters
- Supports PXH, MXH and MXS SFF-8644 transparent and non-transparent boards.



MTFCXFF-xM

MTP/MPO Fiber Cables

- MPO/MTP compatible cables
- Lengths 0.5 - 100 meters
- Supports all PXH84X products
- 12 strand and 24 strand fiber



IXCxM

PCIe iPass Cables

- PCIe External cabling 2.0 spec
- Lengths 0.5- 7 meters
- Supports all IXH, IXS and PXH iPass transparent and non-transparent boards