

# Industrial Class Power Supplies

## Industrial Mini-Redundant AC Power Supply







Model Name	Power (typical)	Maximum DC Output Current						AC Voltage Input Range	Certifications
		+5 V	+3.3 V	+12 V	-12 V	-5 V	+5 Vsb		
APS-946XAR	460 W	25 A	25 A	30 A	0.8 A	--	2 A	Universal	UL/cUL/TUV/CCC
APS-940XAR-EPS12 (for RK-440)	400 W	35 A	25 A	28 A	1.2 A	0.5 A	2 A	Universal	UL/cUL/TUV/CCC
APS-960XAR-EPS12 (for RK-470MB)	600 W	25 A	25 A	49 A	0.8 A	--	3.5 A	Universal	UL/cUL/TUV/CCC

■ Dimensions: 195 x 150 x 86 (mm)

## Industrial AC Power Supply PS2 Form Factor



Model Name	Power (typical)	Maximum DC Output Current										AC Voltage Input Range	Certifications
		+5 V	+3.3 V	+12 V1	+12 V2	+12 V3	+12 V4	-12 V	-5 V	+5 Vsb			
APS-930XA-ATX12 	300 W	16 A	19 A	17 A	17 A	--	--	0.5 A	0.3 A	3 A	Universal	UL/cUL/TUV/CCC	
APS-946XA-EPS12 	460W	20 A	24 A	16 A	16 A	--	--	0.5 A	0.3 A	3 A	Universal	UL/cUL/TUV/CCC	
APS-960XA-EPS12 	600W	25 A	25 A	16 A	16 A	16 A	16 A	0.5 A	0.3 A	4 A	Universal	UL/cUL/TUV/CCC	
APS-946XA-EPS12 (for RK-440)	460W	40 A	30 A	32 A	--	--	--	1 A	0.8 A	2 A	Universal	UL/cUL/TUV/CCC	
APS-9100XA-EPS12 (for RK-470MB) 	1000W	25 A	25 A	50 A	50 A	--	--	0.8 A	--	3.5 A	Universal	UL/cUL/TUV/CCC	

■ Dimensions: Standard PS2 form factor, 140 x 150 x 86 (mm) ; APS9100XA-EPS12(for RK-470MB) form factor, 220 x 150 x 86 (mm)

## Industrial DC-DC Power Supply PS2 Form Factor




Model Name	Power (typical)	Maximum DC Output Current						DC Voltage Input Range	Certifications
		+5 V	+3.3	+12 V	-12 V	-5 V	+5 Vsb		
APS-930/48X	300 W	35 A	30 A	18 A	1 A	0.5 A	1.5 A	40 ~ 72 VDC (48 VDC nominal)	UL/cUL/TUV
APS-930/24X	300 W	30 A	15 A	15 A	2 A	2 A	1.2 A	19 ~ 32 VDC (24 VDC nominal)	UL/CSA/TUV

■ Dimensions: 150 x 140 x 86 (mm)

## Industrial AC Power Supply 1U/2U Form Factor



Model Name	Power (typical)	Maximum DC Output Current							AC Voltage Input Range	Certifications
		+5 V	+3.3 V	+12 V1	+12 V2	-12 V	-5 V	+5 Vsb		
APS-9130XU 	300 W	16 A	14 A	16 A	16 A	0.5 A	0.3 A	3 A	Universal	UL/cUL/TUV/CCC
APS-9235XU	350 W	25 A	20 A	28 A	--	0.5 A	0.5 A	2 A	Universal	UL/cUL/TUV/CCC

■ Dimensions: APS-9130XU: 190 x 100 x 40.5 (mm)  
APS-9235XU: 215 x 100 x 70 (mm)

# CPU Coolers



## LGA775



PN	32-20065-0010	32-20134-0000	32-20086-0000
Thermal Dispatch Performance	- Core 2 Duo E8400 - Up to 3.0 GHz - 45nm, 65Watt, 6MB L2 Cache	- Core 2 Duo Q9400 - Up to 2.66 GHz - 45nm, 95Watt, 6MB L2 Cache	- Core 2 Duo Q9400 - Up to 2.66 GHz - 45nm, 95Watt, 6MB L2 Cache
FAN	10.48 CFM 5,500+- 10% R.P.M	9cm/ 78.74 CFM 6,100 +- 10% R.P.M	9cm/ 16.57CFM 4,500 +-10% R.P.M
Heatsink Materials	Cooper	Aluminum + Cooper	Aluminum + Cooper
Heatsink Dimensions	92L x 87.6W x 7.7H (mm)	ø107.7*25H (mm)	90L x 104W x 28H (mm)
Dimensions	92L x 87.6W x 28H (mm)	ø107.7*50.2H (mm)	90L x 104W x 53H (mm)
Weight	465 g	360 g	536 g
Minimum Chassis Height	1U	2U	3U
Recommended Chassis	RK-110S, RK-110SE	RK-210S, RK-210E, RK-260-E, RK-260MB, RK-440, RK-460MB, RK-610AM, RK-608MB-C	RK-440, RK-460MB, RK-610AM, RK-608MB-C
Supported Boards	NuPRO-E315/E320/935A/A301	NuPRO-E315/E320/935A/A301/ M-322/M-302	M-322/M-302



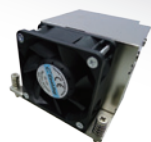
## LGA 1156



PN	32-20131-0000	32-20113-2000	32-20113-0000
Thermal Dispatch Performance	- Core i5-660 - Up to 3.33GHz - 32nm, 73Watt, 4MB Cache	- Core i7-2600 - Up to 3.4GHz - 32nm, 95Watt, 8MB Cache	- Core i7-2600 - Up to 3.4GHz - 32nm, 95Watt, 8MB Cache
FAN	75mm( blower)/11.83 CFM 5,500+- 10% R.P.M	95mm/ 78.74 CFM 6,100+- 10% R.P.M	95mm/ 42.73 CFM 4,200+- 10% R.P.M
Heatsink Materials	Copper	Aluminum + Cooper	Aluminum + Cooper
Heatsink Dimensions	84L x 84W x 13H (mm)	ø 95*24.8H (mm)	ø 90*39.3H (mm)
Dimensions	84L x 84W x 28H (mm)	ø 95*50.2H (mm)	ø 90*67.7H (mm)
Weight	382 g	295 g	--
Minimum Chassis Height	1U	2U	3U
Recommended Chassis	RK-110S, RK-110SE	RK-210S, RK-210E, RK-260-E, RK-260MB, RK-440, RK-460MB, RK-610AM, RK-608MB-C	RK-440, RK-460MB, RK-610MB, RK-608MB
Supported Boards	NuPRO-E340/E330/A331	NuPRO-E42/E340/E330/A40H/A331/M-342	M-342/IMB-M40H



## LGA2011



PN	32-40289-0000
Thermal Dispatch Performance	-Xeon E5-2658 v2 -up to 2.4 GHz -22nm, 95Watt, 25MB Cache
FAN	6cm/ 50.40 CFM 9,000+- 10% RPM
Heatsink Materials	Copper
Heatsink Dimensions	63.9L x 89.7W x64H (mm)
Dimensions	89.2L x 89.7W x64H (mm)
Weight	396 g
Minimum Chassis Height	2U
Recommended Chassis	TRL-40, RK-470MB
Supported Boards	IMB-S90

# Accessories

## HDD Adapter Brackets

### Ordering Information

- Two 2.5" HDD in one 3.5" bay: 91-95056-0010
- One 3.5" HDD in one 5.25" bay: 34-30264-1000



## 4U Rear I/O Panel Kit

### Ordering Information

- ATX rear I/O panel for RK-410/615: 58-80013-0000
- ATX rear I/O panel for RK-610A: 34-90063-0000
- 15-slot rear I/O panel for RK-610A: 34-90064-0000



## 2U-EISI Riser Card

- 2U 90-degree Riser Card, PCIe x16 + 1 PCI slots
- Designed for RK-260MB-D

### Ordering Information

- 92-94057-0020



## COM Cable

- COM cable with bracket

### Ordering Information

- 1 port (L=230mm): 30-25004-0000
- 2 port (2.54mm pitch, L=230mm): 30-25003-0020
- 2 port (2.00mm pitch, L=230mm): 30-25003-1000
- 2 port (for M-302, M-322, L=450mm): 30-25003-4000
- 6 port (for NuPRO-E340/E330/A331)
- 2 port (for M-342, IMB-M40H, L=450mm): 30-25003-3000



## USB 3.0 Cable

- 2-port USB 3.0 cable with bracket, L=450mm

### Ordering Information

- 30-25046-0000



## USB 2.0 Cable

- 2/4-port USB 2.0 cable with bracket

### Ordering Information

- 2-port (L=400mm): 30-25010-1000
- 4-port (L=600mm): 30-25009-2000
- 2-port (L=400mm) with shielding ground: 30-25010-3000
- 4-port (L=600mm) with shielding ground: 30-25009-3000



## KB/MS Cable

- KB/MS cable with bracket (NuPRO-E340/A331/965/935, L=250mm)

### Ordering Information

- 2x Mini-DIN PS/2 KB/MS cable with bracket: 30-01019-2010
- 1x USB + 1x Mini-DIN PS/2 KB/MS "combo" cable with bracket: 30-25027-0000



## DVI Cable

- DVI-D cable with bracket for onboard connector (NuPRO-E340/A331, L=220mm)

### Ordering Information

- 30-01052-2000



## 2.5" HDD Mobile Rack Kit

- 2x 2.5" HDD in a 3.5" drive bay (tray-less)
- SATA interface
- Black

### Ordering Information

- 29-033MA-0000



## 3.5" HDD Mobile Rack Kit

- 3x 3.5" HDD in two 5.25" drive bay
- SATA interface
- Black

### Ordering Information

- 29-033B0-0060



# Graphics & Audio Cards

## mPCIe-8770

### PCIe 2D VGA Display Card

- PCIe VGA Controller XGI™ Volari™ Z11
- PCI Express Spec. compliant
- High Performance 2D Accelerator
- Supports 230 MHz pixel clock
- Supports 4:3 resolution up to 1600x1200, 256/32K/64K/16M colors (70Hz NI)
- Driver support: Windows® 2000, XP, Vista 32/64-bit, 7 32/64-bit; Fedora™ 10, RHEL™ 5



## DB-UVGA16

### USB Graphics Adapter, internal mount, DB-15 connector

- Mounts in DB9 cutout on chassis or in PCI slot
- Uses internal USB pin header
- Display resolutions up to: 1600 x 1200 (4:3), 1680 x 1050 (16:10)
- Supports multiple display modes: Primary, Extended, Mirror (up to 6 additional monitors)



## DB-Audio2

### High Definition Audio Daughter Board with Line-in, Line-out and Mic-in

- Realtek ALC262 High Definition Audio codec
- Three jacks: line-in, line-out and mic-in
- 5x2 pin header for cable connection to external audio header on SBC
- 4-pin header interface for CD audio output

