

cPCIS-3320 Series

9U Dual System CompactPCI® Chassis with Redundant Power Supplies



Features

- Standard 6U CompactPCI® and PICMG® 2.5 H.110 CT Bus for all peripheral slots
- PICMG® 2.1 Hot Swap compliant 64-bit CompactPCI® backplane with P3 & P5 rear I/O
- Dual cPCI segments (System A: 1 + 7 slots, System B: 1 + 4 slots)
- 3+1 (750 W + 250 W) hot swappable redundant power supplies with universal AC input
- Redundant cooling architecture
- Magnetic circuit breaker protection for AC input

Specifications

Enclosure	EIA RS-310C 19 9U high rackmount enclosure Coated metal plate outer covering Guarded power switch and reset button		
Form Factor	6U CompactPCI®		
CompactPCI®	2.0 R3.0, 2.1 R2.0, 2.5 R1.0, 2.7 R1.0, 2.9 R1.0, 2.11 R1.0		
Standards			
Backplane		System A	System B
cPCI Bus		64-bit/33 MHz	64-bit/66 MHz
System Slot		One	One
Peripheral Slot		Seven	Four
H.110 CT Bus		Comply with all peripheral slots	
Rear I/O		All slots support P3, P4, P5 rear I/O with AB-type shroud	
V (I/O)		3.3 V or 5 V (default) selectable	
CMM slot		One	
Power Input		ATX connector x2, DC screw terminals	
Power Supply	Supports current sharing on 5 V, 3.3 V and 12 V PICMG® 2.11 47-pin power interface Power module: cPS-H325/AC x4		
		Max. Load*	Min. Load
+5 V		132.0 A	6.0 A
+3.3 V		132.0 A	N/A
+12 V		22.0 A	N/A
-12 V		4.0 A	N/A

* Max. load is the continuous operating load of each rail individually. The Max. load of each rail cannot be drawn from all outputs simultaneously.

Alarm Module	Basic Alarm Module	Monitors inner chassis temperature, voltage and fan status Abnormal status will generate alarm and LED warning Alarm reset
Drive Bay	Two 5.25 drive bays	
Cooling System	Two top blowers for ventilation	Rated speed for each fan: 3150 RPM Rated power for each fan: 6.12 W Maximum Air Flow: 21.02 CFM (Call for Availability)
	One top fan for ventilation	Rated speed for each fan: 4000 ±500 RPM Rated power for each fan: 2.64 W Maximum Air Flow: 48.2 CFM
	Five fans for front-access intake	Rated speed for each fan: 4000 ±500 RPM Rated power for each fan: 2.64 W Maximum Air Flow: 48.2 CFM
Physical	Dimensions	483.2 x 399 x 339.1 (mm, W x H x D, w/ handle)
	Weight	24.5 kg/53.9 lbs (including redundant power supply and backplane only)
Operating Temp.	0°C to 55°C (dependent on system configurations)	
Storage Temp.	-20°C to 80°C	
Humidity	5% to 95%, non-condensing	
Shock	15 G peak-to-peak, 11 ms duration, non-operation	
Vibration	Non-operation: 1.88 Grms, 5-500 Hz, each axis Operation: 0.5 Grms, 5-500 Hz, each axis, tested with 2.5" HDD	

Recommended Configurations

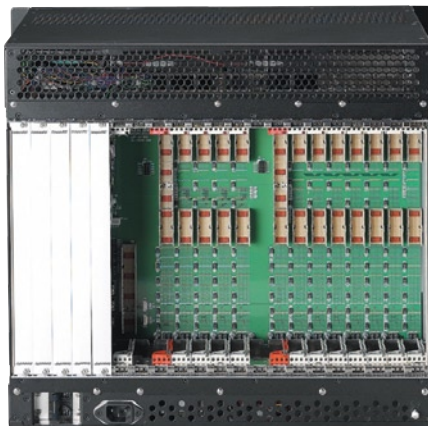
CPU Board (System slot)	Rear I/O Board
cPCI-6520	cPCI-R6002, cPCI-R6100, cPCI-R6110, cPCI-R6200, cPCI-R6700
cPCI-6930	cPCI-R6002D, cPCI-R6100, cPCI-R6110, cPCI-R6200, cPCI-R6700(D)
cPCI-6615, cPCI-6615D	cPCI-R6002
cPCI-6510, cPCI-6510V	cPCI-R6002, cPCI-R6100, cPCI-R6110, cPCI-R6210, cPCI-R6700

cPCI-6880, cPCI-6880P	cPCI-R6000P, cPCI-R6002, cPCI-R6100, cPCI-R6110, cPCI-R6700
cPCI-6210, cPCI-6210D	cPCI-R6002, cPCI-R6100, cPCI-R6110, cPCI-R6700(D)

Ordering Information

Model Number	cPCI Bus	PSU Type	CMM	PSU MAX	AC-INPUT	H.110	CD/DVD ROM	2.5 HDD Rack	3.5 HDD Rack	5.25 HDD Rack	Alarm Board
cPCIS-3320/AC	64-bit/66MHz	AT	--	4x 250W	1	Y	--	--	--	--	Basic Alarm Module
cPCIS-3320/AC/CMM	64-bit/66MHz	AT	Y	4x 250W	1	Y	--	--	--	--	--

Mechanical Layout



Rear View

